

HP LaserJet P3015DN Install Guide for Mac Computers

Welcome to the installation of the new library1Duplex and library2Duplex printers located in the library at Platt. These printers replace the old library1 and library2 printers you currently have installed on your computer. These new printers print at about 42 pages per minute and can print on both sides of the paper (Duplex). Here are the steps to install them on you Mac computer.

Step 1: Open the System Preference Pane

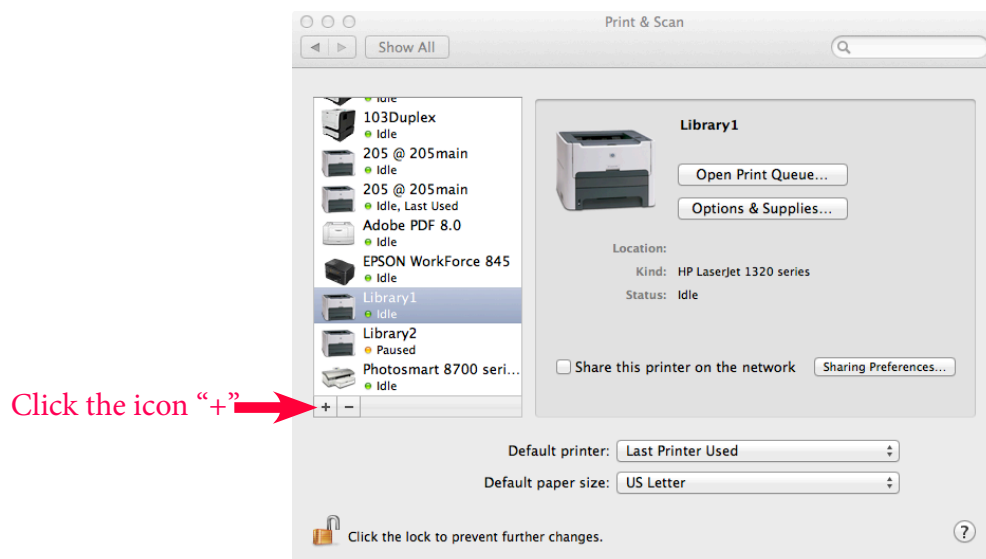
Click the Apple menu and select System Preferences

Step 2: Click on the Print & Scan icon

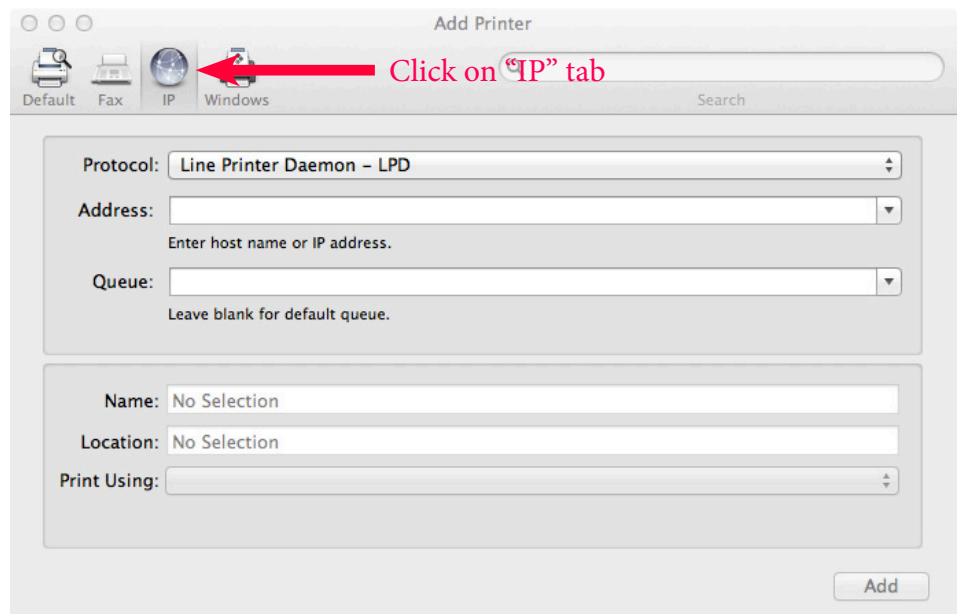


Step 3: Click the add the printer icon

a. Click the "+" icon at the bottom left



Step 4: Click the “IP” icon to enter the new printer info



Step 5: Add the printer

- Click in the Address field and enter the IP for the new printer
 - 100Duplex IP is **192.168.0.43**
 - 103Duplex IP is **192.168.0.44**
 - library1Duplex IP is **192.168.0.130**
 - library2Duplex IP is **192.168.0.61**
- The computer will search for the printer and when found will show: “HP Laserjet P3010 Series”
- Click in the Name field and enter the name of the printer:
100Duplex or 103Duplex or library1Duplex or library2Duplex
- Click Add to add the printer
- Repeat Steps 3, 4, and 5 for the other printers

