



# MOTORCYCLE OPERATOR MANUAL

WITH SUPPLEMENTARY INFORMATION FOR THREE-WHEEL MOTORCYCLES

18<sup>TH</sup> EDITION



Riding a motorcycle is fun and can be a great means of transportation. But proper skills and knowledge are needed to ride safely in traffic conditions.

This 18th edition of the Motorcycle Safety Foundation Motorcycle Operator Manual\* contains tips and strategies to help riders manage risk. The manual was written for novices and designed for use in licensing programs, but there's great information for all two- and three-wheel motorcycle riders. Topics covered include motorcycle controls, developing effective street strategies, group riding, riding with a passenger, and more.

Additional resources are available at [MSF-USA.org](http://MSF-USA.org), including the new MSF Basic eCourse, with interactive online exercises. But the best way to learn to ride is through formal hands-on training, like with the MSF Basic *RiderCourse*, where you'll learn how to properly operate a motorcycle with the help of MSF-certified

RiderCoaches.

Making motorcycling safer, and as a result more fun, is our goal.



Erik Pritchard

*President*

*Motorcycle Safety Foundation*

\*The original Motorcycle Operator Manual was developed by the National Public Services Research Institute under contract to the National Highway Traffic Safety Administration as part of a cooperative agreement between NHTSA and the MSF. Continuing to help state agencies with their licensing programs, the MSF offers the source files of this booklet to them at no charge. Write to [MSF@MSF-USA.org](mailto:MSF@MSF-USA.org) for more information.

THE TOP FIVE REASONS MOTORCYCLISTS  
CRASH ON UTAH HIGHWAYS BASED ON 2016  
STATISTICS PROVIDED BY THE UTAH  
DEPARTMENT OF PUBLIC SAFETY'S HIGHWAY  
SAFETY OFFICE:

1. Failure to yield right of way
2. Follow too closely
3. Failed to keep in proper lane
4. Speed too fast for conditions
5. Ran off the road

## 2CONTENTS

Motorcycling in Utah .....UT 1

### THE RIDER AND THE MOTORCYCLE 3

#### PREPARING TO RIDE

- Wear the Right Gear 4
- Know Your Motorcycle 6
- Know Your Responsibilities 9

#### RIDE WITHIN YOUR ABILITIES

- Basic Vehicle Control 10
- Keeping Your Distance 13
- SEE 17
- Intersections 19
- Increasing Conspicuity 22
- Crash Avoidance 25
- Handling Dangerous Surfaces 28
- Mechanical Problems 30
- Animals 32
- Flying Objects 33
- Getting Off the Road 33
- Carrying Passengers  
and Cargo 33 Group Riding 36

#### BEING IN SHAPE TO RIDE

- Why This Information Is  
Important 40
- Alcohol and Other Drugs in  
Motorcycle Operation 40
- Alcohol in the Body 40
- Alcohol and the Law 41
- Minimize the Risks 42
- Step in to Protect Friends 42

Cannabis and  
Motorcycle Operation 43

Fatigue 43

### EARNING YOUR LICENSE OR ENDORSEMENT 44

#### THREE-WHEEL SUPPLEMENT

- Supplementary Information for Three-  
Wheel Motorcycles 46 Know Your Vehicle  
46
- Basic Vehicle Control 48
- Carrying Passengers and Cargo 51 **HAND**

#### SIGNALS 52

#### T-CLOCS PRE-RIDE CHECKLIST 54



## MOTORCYCLING IN UTAH

Motorcycling is a very popular form of recreation as well as transportation for thousands of residents through the Beehive State. Riding is fun, exciting, and challenging, but it has its risks because riders are exposed and vulnerable. The greatest challenge you face when riding is to avoid accidents and injury.

The basic content of this motorcycle operator manual has been developed and provided by the Motorcycle Safety Foundation, and discusses motorcycle operations in general. This section contains information pertaining specifically to motorcycling in the State of Utah, and is only a part of what every good motorcycle rider should know. This section condenses or paraphrases the actual language of the Utah Traffic Code. We hope this information will help you enjoy riding and meet the challenges every rider faces on our streets and highways.

### REQUIRED EQUIPMENT

Every motorcycle and every other type of motor-driven cycle (bicycles with motors, etc.) shall be equipped with the following items:

- One head lamp;
- One tail lamp;
- Either a tail lamp or separate lamp to illuminate the rear license plate with a white light;
- One red reflector on the rear;
- One stop lamp;
- A braking system;
- A horn or warning device;
- A muffler and emission control system which complies with Utah requirements;
- A mirror;
- Depth of tire tread no less than 2/32 inch;
- Foot rests for any passenger;
- Handlebars not higher than shoulder height; and
- All motorcycles manufactured after January 1, 1973 must be equipped with turn signals

It is unlawful for a person to operate a motor vehicle upon Utah highways unless the vehicle is in safe and good mechanical condition and all required equipment is in good working order.

### PROTECTIVE HEADGEAR (HELMETS)

Everyone is encouraged to always wear an approved helmet when riding a motorcycle. **It is against the law for anyone under the age of 21 to operate or ride a motorcycle, or any type of motor-driven cycle, upon a public street or highway, unless he/she is wearing protective headgear which complies with Federal standards.**

**NOTE: A court shall waive \$8 of a fine charged to a person operating a motorcycle or motor-driven cycle for a moving traffic violation if the person was 21 years of age or older at the time of operation and wearing a protective headgear that complies with DOT standards.**

### **SAFETY INSPECTIONS**

Effective January 1, 2018, safety inspections are no longer required for most vehicles, including all motorcycles/motor-driven cycles. However, first-time, street-legal ATV registration does require a safety inspection. For further information, contact the Utah Dept. of Motor Vehicles.

### **REGISTRATION**

Unless exempted, a person may not operate a motorcycle in Utah unless it has been registered in accordance with Utah statutes. Utah registration is required for any motor vehicle within sixty days of the owner establishing residency in this State.

Residency in Utah is established when an individual has a domicile in the State; remains in the State for a period of six months or more during any calendar year; engages in a trade, profession, or occupation in the State; or accepts employment in other-than-seasonal work, and does not commute into the State.

### **INSURANCE**

You may be required to state, in writing, or present other reasonable evidence, that you, (not the bank, loan company or lien holder) have owner's insurance (or similar security) in effect at the time of registering, or obtaining license plates for your motorcycle. The law also states that any person operating a motorcycle shall have in his/her immediate possession evidence of insurance for that vehicle. Failure to provide proof of insurance when requested by a peace officer can result in a surrender of your driver license. Any additional violations of this law can result in a surrender of the registration for your vehicle.

### **LICENSE**

"License" means the privilege to drive a motor vehicle. "License certificate" (usually referred to as a driver license) means the evidence of the privilege issued to drive a motor vehicle. Utah law requires that everyone operating a motorcycle on Utah public roads and highways must have in his/her possession a valid driver license with an endorsement for operating motorcycles. A temporary learner permit can be issued if the applicant is at least 16 years old, has a valid Class D or Commercial Driver License, and has passed the vision test and the required motorcycle written test. To obtain a learner permit, you must go to a driver license office, complete the application process, and pay the fee. A learner permit is valid for six months.



For the first two months from the date a motorcycle learner permit is issued, the operator of a motorcycle who holds a motorcycle learner permit **may not**:

- Operate a motorcycle on a highway with a posted speed of 60 miles per hour or more,
- Carry passengers,
- Ride between the hours of 10 P.M. and 6 A.M.

After holding a motorcycle learner permit for two months, the learner permit holder may operate a motorcycle without the aforementioned restrictions imposed.

**NOTE: Anyone younger than 19 years old must hold the motorcycle learner permit for two months. The two-month requirement may be waived upon proof of completion of the Basic Rider Course (BRC). See page UT 15 for more information.**

### **TIERED LICENSING**

Motorcycle endorsements are issued based on a tiered system. The restriction will be determined by the size of the motorcycle used at the time of the skills test.

- If you test on a motorcycle 90 cc or less, you will be restricted to riding motorcycles 90 cc or less,\*
- If you test on a motorcycle 249 cc or less, you will be restricted to riding motorcycles 249 cc or less\*
- If you test on a motorcycle 649 cc or less, you will be restricted to riding motorcycles 649 cc or less\*
- If you test on a motorcycle 650 cc or larger, you will not be restricted.\*

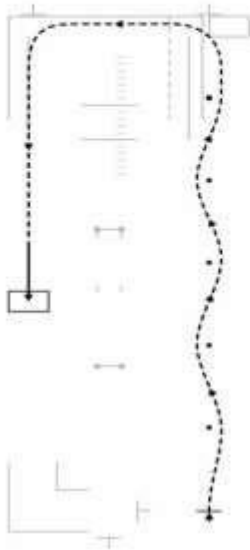
*\*Also applies to three-wheelers, and all motor-driven cycles*

### **MOTORCYCLE SKILL TEST**

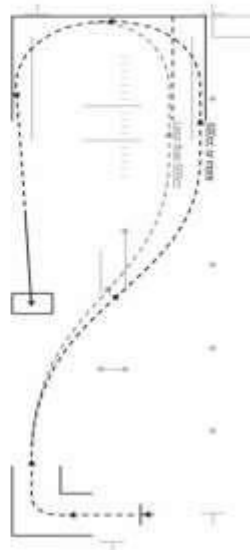
You must provide your own motorcycle for the skills test at the driver license office. The following diagrams represent the four parts of the motorcycle skills test. Applicant must successfully complete all parts to obtain a motorcycle endorsement.

## TWO WHEEL RIDING SKILLS TEST

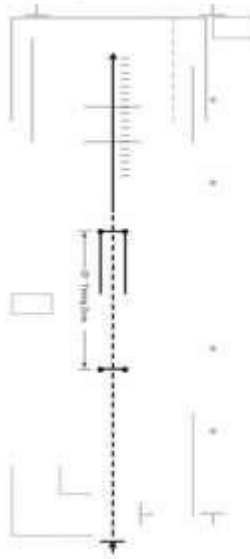
CONE WEAVE, NORMAL STOP



TURN FROM A STOP, U-TURN



QUICK STOP

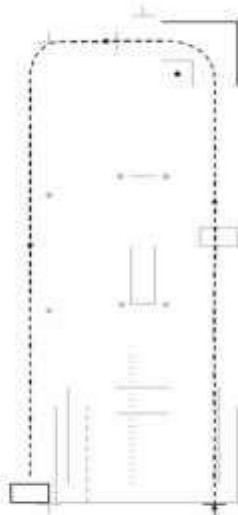


OBSTACLE SWERVE



## THREE WHEEL RIDING SKILLS TEST

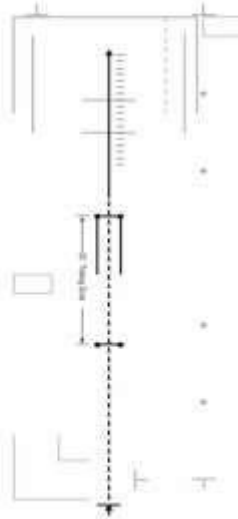
LEFT TURN, NORMAL STOP



CONE WEAVE, TURN FROM A STOP



QUICK STOP



OBSTACLE SWERVE



**NOTE:** Due to space availability at certain driver license offices, the test may be adjusted in some areas. Motorcycle skills tests are given by appointment only in most offices. If

**you test on a three-wheeled motorcycle you will be restricted to riding only three-wheeled motorcycles.**

### **TRAFFIC RULES AND REGULATIONS**

All operators of any motor vehicle, including motorcycles, must comply with the same traffic rules and regulations. Some items that may be of specific interest to you are listed below for your information. (All of the items pertain to motorcycles and motor-driven cycles.)

- When operating a motorcycle, you must have in your immediate possession a valid driver license which authorizes operation of a motorcycle.
- When operating a motorcycle, you must have proof of financial responsibility (insurance) in your immediate possession.
- Motorcycles are permitted to use High Occupancy Vehicle (HOV) Lanes.
- A person operating a motor vehicle in Utah is considered to have given his/her consent to a chemical test or tests for the purpose of determining whether he/she was operating the vehicle under the influence of alcohol, any drug, or combination of alcohol and any drug. Failure to comply with the request of a peace officer to take a test or tests will result in revocation of driving privileges.
- You must signal your intention to turn right or left, or to change lanes, for at least **TWO** seconds before beginning the turn or lane change.
- Upon the approach of an authorized emergency vehicle using audible (sirens, etc.) and/or visual signals (flashing lights, etc.), you must yield the right-of-way, and immediately move to the right-hand edge or curb of the road or highway and stop. You are to remain stopped until the emergency vehicle has passed.
- You cannot carry another person on a motorcycle unless it has been designed to carry more than one person. The passenger must ride upon the permanent and regular seat, if designed for two persons, or upon another approved seat firmly attached to the motorcycle. The additional seat must not degrade or interfere with the safe control of the motorcycle. The motorcycle must also be equipped with footrests for the passenger.
- It is unlawful to operate a motorcycle while carrying a package, bundle, or other article which prevents you from keeping both hands on the handlebars.
- All motorcycles are entitled to full use of a lane.
- Generally, it is unlawful to ride a motorcycle between lanes of traffic or rows of vehicles, unless certain conditions have been met (see *Lane Filtering* on adjacent page).
- Motorcycles may not be operated more than two abreast in a single lane.

- It is unlawful to throw any lighted material from a moving vehicle.
- Every vehicle shall be equipped, maintained, and operated in such a manner as to prevent excessive and/or unusual noise.
- You may not overtake and pass in the same lane occupied by the vehicle being overtaken.
- No person under 16 years of age, whether resident or non-resident of Utah, may operate a motor vehicle upon any road or highway of the State. (Some exceptions to this rule do exist for off-highway vehicles and for individuals with instruction or practice permits.)
- If a person has a change of address, they are required, by law, to notify the division of the new address within **TEN** days. This may be done online or in person at any field office. When appearing at a field office, you must provide two (2) acceptable proofs of residency. This is important because the post office will not forward mail from the Driver License Division.
- An operator of a motorcycle, moped, or bicycle, who is 16 years of age or older, may, after bringing the vehicle to a complete stop at the intersection or stop line and determines that the traffic-control signal has not detected the operator's presence by waiting a reasonable period of time - and not less than 90 seconds at the intersection or stop line - proceed across the roadway if there are no other vehicles or pedestrians near the intersection.

### **LANE FILTERING**

While operating a motorcycle (other than an autocycle), the operator may pass another vehicle stopped in the same direction of travel in the same lane when the following conditions exist:

- The individual is on a roadway, or an off ramp, divided into two or more adjacent traffic lanes in the same direction of travel,
- The individual is on a roadway with a speed limit of 45 miles per hour or less, or on an off-ramp (lane filtering is not permitted on an on-ramp),
- The vehicle being overtaken in the same lane is stopped,
- The motorcycle is traveling at a speed of 15 miles per hour or less,
- The movement may be made safely.



*(Lane Filtering)*

## OFF-HIGHWAY VEHICLES

This section is included in the handbook for the many users of off-highway vehicles (OHV) in Utah. The following items are not all inclusive and do not contain all pertinent information, but are provided only as a guide for those who might be interested. For more information regarding OHV rules, regulations, registration information, etc., please contact the Utah Parks and Recreation Division at 801-538-7433, or the web address of [www.stateparks.utah.gov](http://www.stateparks.utah.gov).

- Any person operating an OHV is subject to the provisions of the Utah traffic Rules and Regulations, unless specifically excluded.
- OHV operators and passengers under 18 years of age are required to wear properly fitted, safety rated protective headgear. It is recommended that everyone riding an OHV wear a helmet.
- A person may not operate an OHV unless he/she possesses a valid driver license issued by the Driver License Division or the appropriate safety certificate issued by the Division of Parks and Recreation.
- The Division of Parks and Recreation issue safety certificates to individuals who successfully complete the

OHV safety education and training program or pass the knowledge and skills test established.

- No person may operate or transport any OHV on any public land, trail, street or highway unless the OHV has been registered for the current year.
- Out-of-state OHVs operated with in the State of Utah are required to be registered in their home state. Any nonresident owning an OHV who operates or gives another person permission to operate the OHV on any public land, trail, street, or highway in this state shall:
  - Apply for an off-highway vehicle decal issued exclusively for an OHV owned by a nonresident of the state;
  - Pay an annual OHV user fee; and
  - Provide evidence that the person is a non-resident, and the person is the owner of the OHV.

**NOTE: The above does not apply if the OHV is registered in a state that offers reciprocal operating privileges to Utah residents or if OHV is used in a competitive event.**

- It is unlawful for an OHV to be operated along, across, or within the boundaries of an interstate freeway or controlled-access highway.
- An OHV may not be operated on any street or highway not designated as open to OHV use, except when crossing a street or highway; loading or unloading an OHV from a vehicle or trailer; or when an emergency exists.
- Snowmobiles may be operated on streets or highways which have been officially closed for the season to conventional motor vehicle traffic.
- No person shall operate an OHV upon privately owned land without permission from the owner or a person in charge. It is unlawful to alter, deface or damage any fence, gate or other enclosure.
- Registered OHV shall be equipped with:
  - brakes adequate to control the movement of and to stop and hold the vehicle,
  - headlights and taillights when the OHV is operated between sunset and sunrise,
  - a noise control device, and
  - a safety flag when operated on sand dunes.

**CLARIFICATION: Motorcycle operators and passengers under the age of 21 are required to wear protective headgear on all public streets and highways. For off-highway use, all**

**operators and passengers under the age of 18 are required to wear protective headgear.**

## **Street-Legal All-Terrain Vehicles**

### **ALL-TERRAIN TYPE I VEHICLES (ATVs)**

#### **Definition**

An all-terrain type I vehicle means any motor vehicle 52 inches or less in width, having an unladen dry weight of 1,500 pounds or less, traveling on three or more low-pressure tires, having a seat designed to be straddled by the operator and designed for, or capable of travel over unimproved terrain.

#### **Insurance**

State law requires that any person operating a street-legal ATV shall have in his/her immediate possession evidence of insurance for that vehicle. Failure to provide proof of insurance when requested by a peace officer can result in a surrender of your driver license. Any additional violations of this law can result in a surrender of the registration for your vehicle.

#### **Registration**

A street-legal ATV is subject to a safety inspection the **first time** that a person registers an off- highway vehicle as a street-legal all-terrain vehicle. A street-legal ATV will also need to comply with county motor vehicle emissions inspections and maintenance programs.

#### **Licensing**

A street-legal ATV shall comply with the same requirements as a motorcycle as to following traffic rules, registering, titling, odometer statement, vehicle identification, license plates, and registration fees.

**NOTE: If you have a Class D or CDL license you are licensed to drive a street-legal ATV; a motorcycle endorsement is not required.**

#### **Highway Use**



ATVs that meet the requirements may be operated as street-legal ATVs on a street or highway that is a highway with one lane in each direction.

**NOTE: A street-legal ATV operating on a highway may not exceed the lesser of the posted speed limit or 50 miles per hour. If the street-legal ATV is operated on a highway with a posted speed limit higher than 50 miles per hour, the operator shall ride the street-legal all-terrain vehicle on the extreme right hand side of the roadway, and shall equip the street legal all-terrain vehicle with a reflector or reflective tape.**

### **Requirements**

A street-legal ATV shall be equipped with:

- One or more headlamps;
- One or more tail lamps ;
- Either a tail lamp or a separate lamp to illuminate the rear license plate with a white light;
- One or more red reflectors on the rear;
- One or more stop lamps on the rear;
- Amber or red electric turn signals, one on each side front and rear;
- A braking system, other than a parking brake;
- A horn or other warning device;
- A muffler and emission control system which complies with Utah requirements;
- Rearview mirrors on the left side of the driver;
- A windshield, unless the operator wears eye protection while operating the vehicle;
- A speedometer, illuminated for nighttime operation;
- For carrying passengers a seat designed for passengers, a footrest, and handholds for each passenger. For vehicles designed with side-by-side seating, seatbelts are required for each passenger; and
- Tires that do not exceed 26 inches in height, are not larger than the tires that the all-terrain vehicle manufacturer made available for the all-terrain vehicle and have at least 2/32 inches or greater tire tread

## **ALL-TERRAIN TYPE II VEHICLES**

### **Definition**

An all-terrain type II vehicle means any motor vehicle 80 inches or less in width, traveling on four or more low-pressure tires, having a steering wheel, non-straddle seating, a rollover protection system, and designed for or capable of travel over unimproved terrain, and is:

- An electric-powered vehicle, or
- A vehicle powered by an internal combustion engine and has an unladen dry weight of 2,500 pounds or less.

### **Registration**

A street-legal all-terrain type II vehicle is subject to a safety inspection the **first time** that a person registers an off- highway vehicle as a street-legal all-terrain vehicle. A street- legal allterrain type II vehicle will also need to comply with county motor vehicle emissions inspections and maintenance programs.

### **Licensing**

The street-legal all-terrain type II vehicle shall comply with the same requirements as a motorcycle as to following traffic rules, registering, titling, odometer statement, vehicle identification, license plates, and registration fees.

**NOTE: If you have a Class D or CDL license you are licensed to drive a street-legal all-terrain type II vehicle; a motorcycle endorsement is not required.**

### **Highway Use**

All-terrain type II vehicles that meet the requirements may be operated as street-legal all-terrain type II vehicles on a street or highway that is a highway with one lane in each direction.

**NOTE: A street-legal all-terrain vehicle operating on a highway may not exceed the lesser of the posted speed limit or 50 miles per hour. If the street-legal all-terrain vehicle is operated on a highway with a posted speed limit higher than 50 miles per hour, the operator shall ride the street-legal all-terrain vehicle on the extreme right hand side of the roadway and shall equip the street legal all-terrain vehicle with a reflector or reflective tape.**

### **Requirements**

A street-legal ATV shall be equipped with:

- One or more headlamps;
- One or more tail lamps ;
- Either a tail lamp or a separate lamp to illuminate the rear license plate with a white light;
- One or more red reflectors on the rear;
- One or more stop lamps on the rear;
- Amber or red electric turn signals, one on each side front and rear;
- A braking system, other than a parking brake;
- A horn or other warning device;
- A muffler and emission control system which complies with Utah requirements;

- Rearview mirrors on the left side of the driver;
- A windshield, unless the operator wears eye protection while operating the vehicle;
- A speedometer, illuminated for nighttime operation;
- For carrying passengers a seat designed for passengers, a footrest, and handholds for each passenger. For vehicles designed with side-by-side seating, seatbelts are required for each passenger; and
- Tires that do not exceed 26 inches in height, are not larger than the tires that the all-terrain vehicle manufacturer made available for the all-terrain vehicle and have at least 2/32 inches or greater tire tread



**All-Terrain Type I**



**All-Terrain Type II**

**What is a motorcycle?**

A motorcycle is a motor vehicle, other than a tractor, having a seat or saddle for the use of the rider and designed to travel with not



more than three wheels in contact with the ground. Utah Traffic Code 41-6a-102 (35)



**Two Wheeled Motorcycle**

**Three-Wheeled Motorcycle**

*A driver license and a motorcycle endorsement are required to ride a motorcycle on public roads and lands.*

**NOTE: The motorcycle endorsement may have a restriction depending on the size of motorcycle the rider is tested on. See Page UT 3 Tiered Licensing**

**What is a motor-driven cycle?**

A motor-driven cycle is a motorcycle, motor scooter, moped, electric assisted bicycle, motor assisted scooter, and every motorized bicycle having an engine with less than 150 cubic centimeters displacement, or a motor which produces not more than 5 horsepower.



*A driver license and motorcycle endorsement is required to ride a smaller motorcycle or a motor scooter. In some other states, a small motor scooter is sometimes called a moped.*

**NOTE: The motorcycle endorsement may have a restriction depending on the size of motorcycle the rider is tested on. See page 3 Tiered Licensing.**

**What is a motorized bicycle?**

There are two types of motorized bicycles, defined in Utah's Traffic Code section 41-6a-102.

- **Moped** – A motor-driven cycle having pedals to permit propulsion by human power and a motor which produces not more than two brake horsepower. The motor is not capable of propelling the cycle at a speed in excess of 30 MPH on level ground. If an internal combustion engine is used, the displacement may not exceed 50 cubic centimeters and the moped shall have a power drive system that functions directly or automatically without clutching or shifting by the rider after the drive system is engaged.

- **Electric Assisted Bicycle** – An electric assisted bicycle is a bicycle with an electric motor that has a power output of not more than 750 watts, has fully operable pedals on permanently fixed cranks, and is fully operable as a bicycle without the use of the electric motor. Electric assisted bicycles fall into three classes:
  - **Class 1** - Provides assistance only when the rider is pedaling, and ceases to provide assistance when the bicycle reaches the speed of 20 miles per hour
  - **Class 2** - Equipped with a motor that may be used exclusively to propel the bicycle, and is not capable of providing assistance when the bicycle reaches the speed of 20 miles per hour.
  - **Class 3** - Provides assistance only when the rider is pedaling, ceases to provide assistance when the bicycle reaches the speed of 28 miles per hour, and is equipped with a speedometer.



*A driver license is required to operate a moped, but, a motorcycle endorsement is not. A driver license is not required to operate an electric assisted bicycle; however, the following restrictions apply:*

- *An individual under 16 years of age may not operate a class 3 electric assisted bicycle,*
- *An individual under 14 years of age may not operate an electric assisted bicycle with the electric motor engaged on any public property, highway , path, or sidewalk unless the individual is under the direct supervision of their parent or guardian,*
- *An individual under eight years of age may not operate an electric assisted bicycle with the electric motor engaged on any public property, highway, path, or sidewalk*

**What is a motor-assisted scooter?**

A motor assisted scooter is a self-propelled device with at least two wheels in contact with the ground, a braking system capable of stopping the unit under typical operating conditions, and an electric motor not exceeding 2000 watts. It must also have either handlebars and a deck designed for a person to stand on while operating the device; handlebars and a seat designed for a person to sit, straddle, or stand while operating the device; a design for the ability to be propelled by human power alone; and a maximum speed of 20 miles per hour on a paved level surface.

**A person may not operate a motor assisted scooter:**

- In a public parking structure;
- On public property posted as an area prohibiting bicycles;
- In a crosswalk in a negligent manner;
- While carrying more people at one time than the number for which it is designed;
- That has been structurally or mechanically altered from the original manufacturer's design; or
- At a speed greater than 15 miles per hour.



*A driver license is not required to operate a motor assisted scooter. An owner may not authorize or knowingly permit a person under the age of 18 to operate a motor assisted scooter in violation of Traffic Code 41-6a-1115. A person under 8 years of age may not operate a motor assisted scooter with the motor running on any public property, highway, path, or sidewalk.*

**Note: Local authorities may pass ordinances regulating the use of motor assisted scooters on public properties, sidewalks, and roadways. Always check with your city officials for current ordinances before you ride.**

*For more information, please refer to Traffic Code 41-6a-1115.*

**What is an electric personal assistive mobility device?**

An electric personal assistive mobility device is a self-balancing device with:

- Two non-tandem wheels in contact with the ground;
- A system capable of steering and stopping the unit under typical operating conditions;

- An electric propulsion system with average power of one horsepower or 750 watts; and
- A maximum speed capacity on a paved, level surface of 12.5 miles per hour. This does not include a wheelchair.



*A driver license is not required to operate an electric personal assistive mobility device.*

### **What is a mini-motorcycle/pocket bike?**

A mini-motorcycle is a motor-driven cycle that has a seat or saddle that is less than 24 inches from the ground as measured on a level surface with properly inflated tires. A mini-motorcycle does not include a moped or motor-assisted scooter, or a motorcycle that is designed for off-highway use and registered as an off-highway vehicle



*A person may not operate a mini-motorcycle on any public property, highway, path, or sidewalk unless the mini-motorcycle is registered for highway use and the operator is licensed to operate a motorcycle.*

**Note: Many cities in Utah have passed ordinances forbidding mini-motorcycles from being driven on city streets. Check with your city for more information.**

### **What is an autocycle?**

An autocycle means a motor vehicle that is designed to travel with three or fewer wheels in contact with the ground, is equipped with a steering wheel, and is equipped with seating that does not require the operator to straddle or sit astride the vehicle.



*A driver license is required to operate an autocycle; however, a motorcycle endorsement is not.*



# UTAH RIDER TRAINING PROGRAM

## Learn to Ride – Ride to Live

Motorcycling is not only fun and exciting; it is also a practical way to get around. There is no thrill quite like riding a motorcycle. To get the most enjoyment out of riding and to do it safely, you need special skills and strategies to be able to know you are in control. Don't learn through trial and error - that's the hard way!

Two rider training courses are offered through the Department of Public Safety to help you reduce and/or manage risks and to help make your riding more enjoyable. The Utah Motorcycle Rider Training Program, which is part of the Driver License Division of the Department of Public Safety, administers the statewide rider education program. The courses are conducted at approximately 10 sites throughout the State. These courses, developed by the Motorcycle Safety Foundation, will enhance your street survival skills, whatever your age or experience.

### ***Basic Rider Course (BRC)***

This is a 15-hour basic course (10 hours of actual riding), which teaches physical and mental skills and the responsible attitude necessary for safe, enjoyable riding. In the classroom, you'll learn how to create a strategy for riding in traffic and how to deal with critical situations. On the off-street, protected range, you will learn in building-block order the proper methods for gear shifting, turning and stopping, as well as emergency braking, swerving, and proper cornering techniques. Motorcycles and helmets are furnished for this course. No previous riding experience is required.

**BENEFITS** The obvious and most important benefit you will have from this course is that you will learn how to operate your motorcycle safely. In addition, many insurance companies offer reduced premiums to BRC graduates and, if you apply for a motorcycle endorsement on your Utah driver license within six months after completing the BRC, the Driver License Division may waive the skill (road) portion of your motorcycle endorsement tests. Some motorcycle distributors/dealers and brand-sponsored clubs will reimburse part or all of the tuition.

**NOTE: Starting July 1, 2009 If you are 15 years and six (6) months of age or older and hold a valid learner permit or driver license for any classification or are eligible for a motorcycle learner permit, you may enroll in and complete an approved rider training course.**

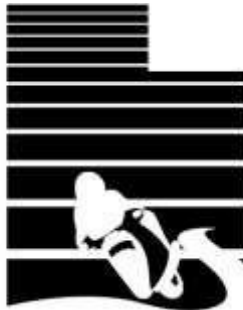
### ***Basic Rider Course 2 (BRC2)***

This five-hour course is designed specifically for the experienced rider and has something for you, whether you have been riding for one year or for many years. Some of the things you will learn are how to manage risks, control rear-wheel skids, detect and avoid hazards, and manage traction. The range portion of the course will provide you an opportunity to safely reach new limits under the expert guidance of an experienced instructor. You will ride your own motorcycle, so you will also be able to safely explore the limits of your motorcycle.

**BENEFITS** In addition to honing your riding skills and fine-tuning the mental skills you need for survival in traffic, you will have a GREAT time! There are also many insurance companies which offer reduced premiums to graduates of the BRC2. If you apply for a motorcycle endorsement on your Utah driver license with-in six months after completing the BRC2, the Driver License Division may waive the skill (road) portion of your motorcycle endorsement tests if you were tested at the end of the BRC2 by a certified motorcycle education instructor, and received a Motorcycle Safety Foundation (MSF) BRC2 License Waiver *RiderCourse* card.

**NOTE: If you take the Basic Rider Course (BRC) or the Basic Rider Course 2 (BRC2) and you are planning on riding a motorcycle greater than 650 cc you will either need to pass the riding skills test with the school or with the Driver License Division using a 650 cc or larger motorcycle.**

If you have any questions about the State rider training program or the classes, please call: **1-801-964-4493** or online at <http://dld.utah.gov>



### Sample Test Questions Utah Section

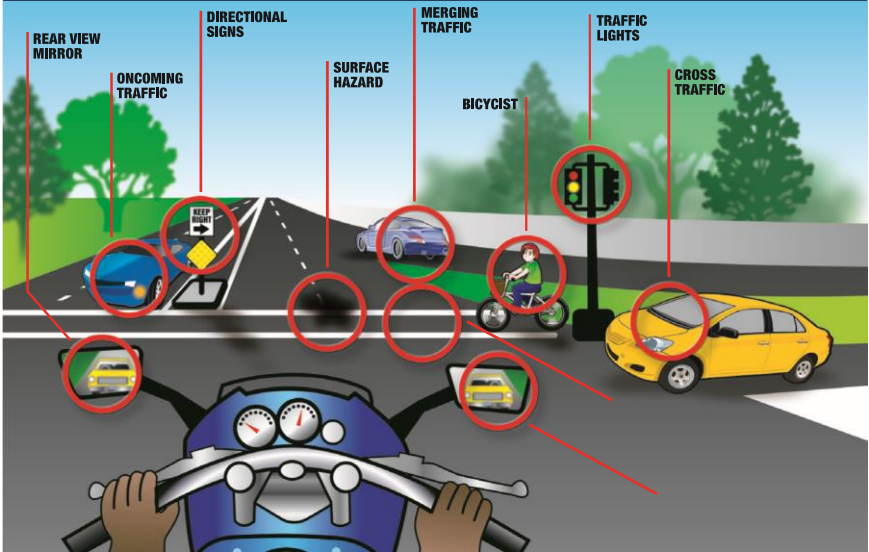
1. Utah law requires two rear-view mirrors on every motorcycle. True or False
2. If the motorcycle you test on is a 250cc motorcycle, you will be restricted to riding motorcycles less than 649cc. True or False
3. Every motorized vehicle driven/ridden on public roads or highways needs to be insured, registered and licensed/endorsed. True or False.
4. If you are younger than \_\_\_\_\_ years of age, you are required to wear a DOT approved helmet.
  - A. 17
  - B. 18
  - C. 21
5. A Beginning Rider Course is required for all riders. True or False

#### Test answers

1. False; 2. True; 3. True; 4. C; 5. False.

UT22

## RIDING ENVIRONMENT



Motorcycling is a unique experience. Compared to a car, you don't sit in a motorcycle, you become its upper half. Not as a passive driver, but as an active rider leaning into a string of smooth corners, playing along with the rhythm of the road; shifting, accelerating, and braking with precision. Whether you ride to and from work or prefer the camaraderie of a group ride on the weekend, motorcycling engages all your senses and creates an exhilarating sense of freedom.

Along with that freedom comes responsibility. All states require some form of license or endorsement to demonstrate you possess a minimum level of skill and knowledge. This booklet and other motorcycle publications can help prepare you to be successful. You might also consider taking a formal hands-on training course, even if your state doesn't require that you complete one. You'll learn how to improve your riding skills and mental strategies, so you can be a safer,

more alert rider and enjoy riding that much more.

The diagram above illustrates the complex environment that awaits you, and supports the concept that, as the Motorcycle Safety Foundation says, "Safe riding depends as much on the mental skills of awareness and judgment as it does on the physical skill of maneuvering the machine."

Successfully operating a motorcycle is a much more involved task than driving a car. Motorcycling requires strength, coordination, and balance, as well as a heightened sense of awareness and position amidst other roadway users. A motorcycle is more responsive than a car, but is also more sensitive to outside forces, like irregular road surfaces or crosswinds. A motorcycle is also less visible than a car due to its narrower profile, and offers far less protection by exposing its rider to other traffic and the

elements. All these risks can be managed through training and education.

- **Most crashes happen** on short trips (less than five miles long), just a few

## 4PREPARING TO RIDE

## PREPARING TO RIDE4

What you do before you begin a ride goes a long way toward riding safely and effectively. Before any ride, a safety-minded rider makes a point to:

- 1 **Wear the right gear**
- 2 **Become familiar with the motorcycle**
- 3 **Check the motorcycle parts and controls**

### WEAR THE RIGHT GEAR

When you ride, your gear is “right” if it protects you. In any crash, you have a far better chance of avoiding serious injury if you wear:

- **A DOT-compliant helmet**
- **Face or eye protection**
- **Protective clothing**

#### Helmet Use

Crashes can occur — particularly among untrained, beginning riders. And one out of every five motorcycle crashes results in head or neck injuries. Head injuries are just as severe as neck injuries — and far more common. Crash analyses show that head and neck injuries account for a majority of serious and fatal injuries to motorcyclists. Research also shows that, with few exceptions, head and neck injuries are reduced by properly wearing a quality helmet.

Some riders choose not to wear a helmet. But, here are some facts to consider:

- **A DOT-compliant helmet** lets you see as far to the sides as necessary. Studies show that a helmet does not keep a rider from spotting danger.

minutes after starting out.

- **Most riders** are riding slower than 30 mph when a crash occurs. At these speeds, helmets can cut both the number and the severity of head and neck injuries by half.

No matter what the speed, helmeted riders are three times more likely to survive head injuries than those not wearing helmets at the time of the crash. The single most important thing you can do to improve your chances if you crash is to wear a securely fastened, quality helmet.

#### Helmet Selection

Recommended are two primary types of helmets, providing two different levels of coverage: three-quarter and full face.

Whichever style you choose, you can get the most protection by making sure that the helmet:

- **Is designed to meet US** Department of Transportation (DOT) and state standards. Helmets with a label from the Snell Memorial Foundation also give you an assurance of quality.
- **Fits snugly**, all the way around.
- **Has no obvious defects** such as cracks, loose padding or frayed straps.

Whatever helmet you decide on, keep it securely fastened on your head when you ride. Otherwise, if you are involved in a crash, it might fly off your head before it gets a chance to protect you.

Tinted eye protection should not be worn when little outside light is available.

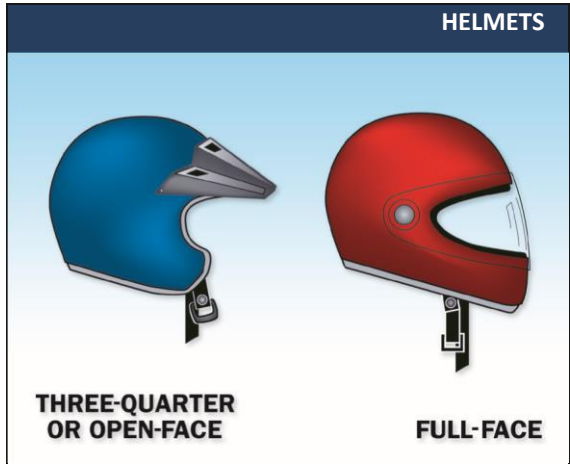
## Eye and Face Protection

A plastic impact-resistant faceshield can help protect your whole face in a crash. It also protects you from wind, dust, dirt, rain, insects and pebbles thrown up from cars ahead. These problems are distracting and can be painful. If you have to deal with them, you can't devote your full attention to the road.

Goggles protect your eyes, though they won't protect the rest of your face like a faceshield does. A windshield attached to the motorcycle is not a substitute for a faceshield or goggles. Most windshields will not protect your eyes from the wind. Neither will eyeglasses or sunglasses. Glasses won't keep your eyes from watering, and they might blow off when you turn your head while riding, or in windy conditions.

*To be effective, eye or faceshield protection must:*

- **Be free** of scratches.
- **Be resistant** to penetration.
- **Give a clear view** to either side.
- **Fasten securely**, so it does not blow off.
- **Permit air** to pass through, to reduce fogging.
- **Permit enough room** for eyeglasses or sunglasses, if needed.



## Clothing

The right clothing protects you. It also provides comfort as well as protection from heat, cold, debris and hot and moving parts of the motorcycle. It can also make you more visible to others.

- **Jacket and pants** should cover arms and legs completely. They should fit snugly enough to keep from flapping in the wind, yet loosely enough to allow you to move freely. Leather offers the most protection. Sturdy synthetic material provides a lot of protection as well. Wear a jacket even in warm weather to prevent dehydration. Many are designed to protect without getting you overheated, even on summer days. Some riders choose jackets and pants with "body armor" inserts in critical body areas for additional protection.
- **Boots or shoes** should be high and sturdy enough to cover your ankles and give them support. Soles should be made of hard, durable, slipresistant material. Keep heels short so they do

not catch on rough surfaces. Tuck in laces so they won't catch on your motorcycle.

- **Gloves** allow a better grip and help



## 6

protect your hands. Your gloves should be made of leather or similar durable material.

- **Hearing protection** reduces noise while allowing you to hear important sounds such as car horns or sirens. Long term exposure to engine and wind noise can cause permanent hearing damage even if you wear a full face helmet. Whether you choose disposable foam plugs or reusable custom molded devices, be sure you adhere to state laws regarding hearing protection.

In cold or wet weather, your clothes should keep you warm and dry, as well as protect you from injury. You cannot control a motorcycle well if you are numb. Riding for long periods in cold weather can cause severe chill and fatigue. A winter jacket should resist wind and fit snugly at the neck, wrists and waist. Good-quality rainsuits designed for motorcycle riding resist tearing apart or ballooning up at high speeds.

*At a minimum, your street-legal motorcycle should have:*

## PREPARING TO RIDE

### KNOW YOUR MOTORCYCLE

There are plenty of things on the highway that can cause you trouble. Your motorcycle should not be one of them. To make sure that your motorcycle won't let you down:

- **Start** with the right motorcycle for you. It should fit you well.
- **Read** the owner's manual.
- **Be familiar** with the controls.
- **Check** the motorcycle before every ride.
- **Keep** it in safe riding condition between rides.
- **Avoid** add-ons and modifications that make it more difficult to handle.

### The Right Motorcycle For You

First, make sure your motorcycle is right for you. It should "fit" you. Your feet should reach the ground while you are seated on the motorcycle, and the controls should be easy to operate.

Smaller motorcycles are usually easier for beginners to operate.



- Front and rear brakes
- Turn signals ■ Horn
- Two mirrors

## Borrowing and Lending

Borrowers and lenders of motorcycles, beware. Crashes are more likely to occur among beginning riders — especially in the first months of riding. Riding an unfamiliar motorcycle adds risk. If you borrow a motorcycle, get familiar with it away from traffic. And if you lend your motorcycle to friends, make sure they are licensed and know how to ride before allowing them out into traffic.

No matter how experienced you may be, ride extra carefully on any motorcycle that's new or unfamiliar to you. More than half of all crashes involve riders with less than five months of experience on their motorcycle.

## Get Familiar with the Motorcycle Controls

Make sure you are completely familiar with the motorcycle before you take it out on the street. Be sure to review the

## CLOTHING

- Headlight, taillight and brake light

### TEST YOURSELF

1

**A plastic shatter-resistant face shield:** A. Is not necessary if you have a windshield.

- B. Only protects your eyes.
- C. Helps protect your whole face.
- D. Does not protect your face as well as goggles.

*Answer - page 45*

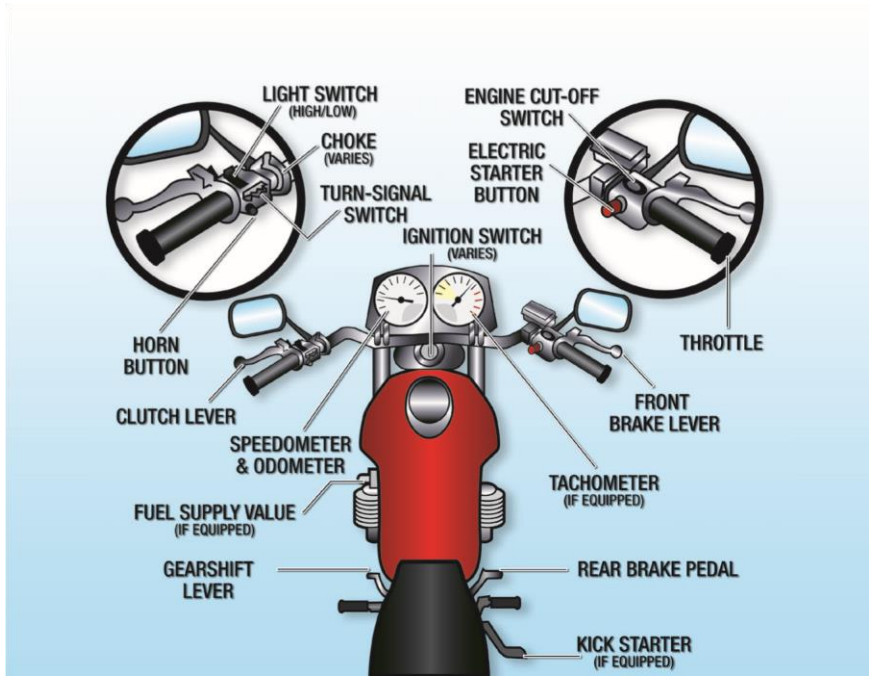
7

owner's manual. This is particularly important if you are riding a borrowed motorcycle.

If you are going to use an unfamiliar motorcycle: ■ **Check it out thoroughly**

- **Find out where everything is,** particularly the turn signals, horn, headlight switch, fuel-supply valve and engine cut-off switch. Find and operate these items without having to look for them.

- **Know the controls** Work the throttle, clutch lever, brakes,



## MOTORCYCLE CONTROLS

### 8

and shifter a few times before you start riding. Be very familiar with the friction zone for manual transmissions.

- **Ride very cautiously** and be aware of surroundings. Accelerate gently, take turns more slowly and leave extra room for stopping.

### Check Your Motorcycle

A motorcycle needs more frequent attention than a car. A minor technical failure on a car is seldom more than an inconvenience for the driver. The same failure on a motorcycle may result in a crash or having to leave your motorcycle parked on the side of the road. If anything's wrong with your motorcycle, you'll want to find out about it before you get in traffic.

The primary source of information about how a motorcycle should be

inspected and maintained is its owner's

## PREPARING TO RIDE

manual. Be sure to absorb all of its important information. A motorcycle will continue to ride like new if it is maintained and routine inspections become part of its maintenance.

A pre-ride inspection only takes a few minutes and should be done before every ride to prevent problems. It's quick and easy to check the critical components and it should be as routine and automatic as checking the weather forecast before heading out for the day. A convenient reminder developed by MSF is T-CLOCS<sup>SM</sup>. There is a T-CLOCS "tear-out" sheet at the back of this manual for you to keep. A T-CLOCS inspection should be conducted before every ride, and includes checks of:

### T — Tires and Wheels

- Check tire inflation pressure, treadwear and general condition of sidewalls and tread surface.
- Try the front and rear brake levers one at a time. Make sure each feels firm and holds the motorcycle when fully applied.

### **C — Controls**

- Make sure the clutch and throttle operate smoothly. The throttle should snap back to fully closed when released. The clutch should feel tight and should operate smoothly.
- Try the horn. Make sure it works.

### **L — Lights and Electrics**

- Check both headlight and taillight. Test the switch to make sure both high and low beams work.
- Turn on both right and left hand turn signals. Make sure all lights are working properly.

- Try both brakes and make sure each one turns on the brake light.

- Clean and adjust mirrors before starting. It's difficult to ride with one hand while you try to adjust a mirror. Adjust each mirror so you can see the lane behind and the lane next to you. When properly adjusted, a mirror may show the edge of your arm or shoulder – but it's the road behind you and to the side that are important.

### **O — Oil and Other Fluids**

- Check engine oil and transmission fluid levels.
- Check the brake hydraulic fluid and coolant level, if equipped, weekly.
- Be sure your fuel valve is open, if equipped, before starting out. With the fuel valve closed, your motorcycle may start with only the fuel that is still in the lines, but will stall once the lines are empty.

- Look underneath the motorcycle for signs of an oil or fuel leak.

### C — Chassis

- Check the front suspension. Ensure there is no binding. The rear shocks and springs should move smoothly.
- If there is a chain or belt, adjust according to the manufacturer’s specifications, and check the sprockets for wear or damage.

### S — Stands

- Ensure the side stand operates smoothly and that the spring holds it tightly in the up position. If equipped, the center stand should also be held firmly against the frame whenever the motorcycle is moving.

Additionally, regular maintenance such as tune-ups and oil changes are important. Wear and tear is normal with use; routine maintenance will

help prevent costly breakdowns. The schedule for regular upkeep for

motorcycle parts and controls is contained in the motorcycle’s owner’s manual.

## KNOW YOUR RESPONSIBILITIES

“Accident” implies an unforeseen event that occurs without fault or negligence. In traffic, that is not the case. In fact, most people involved in a crash should probably claim some responsibility for what takes place.

Consider a situation where someone decides to drive through an intersection on a yellow light turning red. Your light turns green. You pull into the intersection without checking for possible traffic. That is all it takes for the two of you to crash. It was the driver’s responsibility to stop, and it was your responsibility to look before moving out. Someone else might be the first to start the chain of events leading to

a crash, but it doesn't leave any of us free of our responsibility to reduce risk.

As a rider you can't be sure that other operators will see you or yield the right of way. To lessen your chances of a crash occurring:

- **Be visible** — wear proper clothing, use your headlight, ride in the best lane position to see and be seen.
- **Communicate your intentions** — use the proper signals, brake light and lane position.
- **Maintain an adequate space cushion** — when following, being followed, lane sharing, passing and being passed.
- **Search your path** of travel 12 seconds ahead.
- **Identify and separate** hazards.
- **Be prepared to act** — remain alert and know how to carry out proper crash-avoidance skills, like firm braking or swerving.

Blame doesn't matter when someone is injured in a crash. The ability to ride aware, make critical decisions and carry them out separates responsible riders from the rest. Remember, it is up to you to keep from being the cause of, or an unprepared participant in, any crash.

## TEST YOURSELF

2

### *More than half of all crashes:*

- A. Occur at speeds greater than 35mph.
- B. Happen at night.
- C. Are caused by worn tires.
- D. Involve riders who have less than five months of experience on their motorcycles.

*Answer - page 45*

Reading this manual does not teach you the physical skills to control direction, speed or balance. That's something you can learn only through practice, preferably in a formal course of instruction like an *MSF RiderCourse*. But control begins with knowing your abilities and riding within them, along with knowing and obeying the rules of the road.

## BASIC VEHICLE CONTROL

### Body Position

*To control a motorcycle well:*

- **Posture** — Position yourself comfortably so you are able to operate all the controls and steer effectively. This helps you interact well with your motorcycle and allows you to react quickly to hazards.
- **Seat** — Sit far enough forward so that arms are slightly bent when you hold the handgrips. Bending your arms permits you to press on the handlebars without having to reach too far.
- **Hands** — Hold the handgrips firmly to keep your grip over rough surfaces. Start with your right wrist flat. This will help you keep from accidentally using too much throttle. Also, adjust the handlebars so your hands are even with or below your

elbows. This permits you to use the proper muscles for proper steering.

- **Knees** — Keep your knees against the gas tank to help you keep your balance as the motorcycle turns.
- **Feet** — Keep your feet firmly on the footrests to maintain balance. Don't drag your feet. If your foot catches on something, you could be injured and it could affect your control of the motorcycle. Keep your feet near the controls so you can get to them easily if needed. Also, don't let your toes point downward — they may get caught between the road and the footrests.

### Shifting Gears

There is more to shifting gears than simply getting the motorcycle to pick up speed smoothly. Learning to use the gears when downshifting, turning or starting on hills is equally important for safe motorcycle operation.

The gearshift lever is located in front of the left footrest and is operated by the left foot. To shift "up" to a higher gear, position your foot under the shift lever and lift and release. To downshift, press the shift lever down and release. The shift lever changes one gear each time it is lifted or pressed down. Whenever the lever is released, spring loading returns it to center, where the mechanism resets for the next shift up or down. A typical gear pattern is 1-N2-3-4-5. The N is for neutral, which is selected by either a "half lift" from 1st gear or a "half press" from 2nd gear.

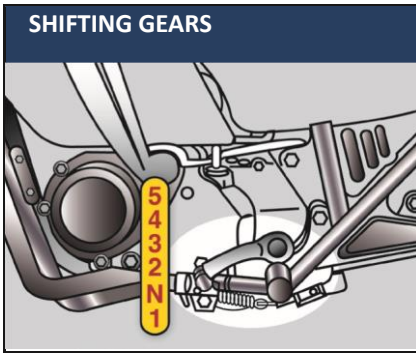
### HOLDING HANDGRIPS





Most motorcycles have five gears, but some have four or six gears.

As your motorcycle increases speed, you will need to shift up to a higher gear. Shift up well before the engine RPM reaches its maximum recommended speed. As a general rule, shift up soon enough to avoid overrevving the engine, but not so soon to cause the engine to lug.



**When upshifting, use a 3-step process:**

1) Roll off the throttle as you squeeze the clutch lever, 2) lift the shift lever firmly as far as it will go and release, 3) smoothly ease out the clutch lever and adjust the throttle.

You should shift down through the gears using the clutch lever as you slow or stop. You can also shift down when you need more power to accelerate.

Make certain you are riding slowly enough when you shift into a lower gear. If not, the motorcycle will lurch, and the rear wheel may skid. When riding downhill or shifting into first gear you may need to use the brakes to slow sufficiently before downshifting safely.

**When downshifting, use a 3-step process:** 1) Roll off the throttle as you squeeze the clutch lever, 2) press the shift lever down firmly and release, 3) ease out the clutch lever as you roll on

the throttle. Rolling on the throttle slightly while smoothly easing out the clutch lever can help the engine come up to speed more quickly and make the downshift smoother. Shifting to a lower gear causes an effect similar to using the brakes. This is known as engine braking. To use engine braking, shift down one gear at a time and ease out the clutch lever through the friction zone between each downshift. Stay in the friction zone until the engine speed stabilizes. Then ease out the lever fully until ready for the next downshift. Usually you shift gears one at a time, but it is possible to shift through more than one gear while the clutch lever is squeezed.

Remain in first gear while you are stopped so that you can move out quickly if you need to.

Work toward a smooth, even clutch lever release, especially when downshifting. It is best to change gears before entering a turn. However, sometimes shifting while in the turn is necessary. If so, remember to do so smoothly. A sudden change in power to the rear wheel can cause a skid.

## Braking

Improper braking remains a significant contributing factor in many motorcycle crashes. Most motorcycles have two brake controls: one for the front wheel and one for the rear wheel. Always use both brakes every time you slow or stop. The front brake is more powerful and can provide 70% or more of your total stopping power. The front brake is safe to use if you use it properly.

Maximum straight-line braking is accomplished by fully applying both front and rear brakes without locking either wheel.

*To do this:*

- **Squeeze the front brake** smoothly, firmly and with progressively more force. Do not grab the brake lever or use abrupt pressure.
- **As the motorcycle's weight** transfers forward, more traction becomes available at the front wheel, so the front brake can be applied more firmly after braking begins.
- **Keep your knees against the tank** and your eyes up, looking well ahead. This helps you stop the motorcycle in a straight line.
- **Apply light-to-lighter pressure** to the rear brake pedal to prevent a rear wheel skid. As weight transfers forward less traction is available at the rear.

Using both brakes for even “normal” stops will permit you to develop the proper skill of using both brakes properly in an emergency. Squeeze the front brake and press down on the rear. Grabbing at the front brake or jamming down on the rear can cause the brakes to lock, resulting in control problems.

### Braking in a Corner

Any time a motorcycle is leaned over, the amount of traction available for braking is reduced. The greater the lean angle, the more the possibility of the tires losing traction.

To stop as quickly and as safely as possible in a curve, and depending on road and traffic conditions, try to get the motorcycle as perpendicular to the road as possible, then brake. If conditions do not allow, brake smoothly and gradually, but do not apply as much braking force as you would if the motorcycle were straight up. As you slow, you can reduce your lean angle, and as more traction becomes available for braking, you can

more firmly apply the brakes, so that by the time the motorcycle is stopped, the motorcycle is straight up, and the handlebars are squared. Doing this well takes practice.

### Linked and Integrated Braking Systems

Some motorcycles have linked braking which connects the front and rear brakes on the motorcycle and applies braking pressure to both brakes when either the front lever or rear pedal is applied. An integrated braking system is a variation of the linked system in which partial front braking is applied whenever the rear brake is activated. Consult the owner's manual for a detailed explanation on the operation and effective use of these systems.


### Anti-Lock Braking Systems (ABS)

ABS is designed to prevent wheel lock-up and avoid skids when stopping in panic situations. ABS operates when too much pressure is applied on either the front or rear brake control. If electronic sensors detect a possible wheel lock, brake pressure is released then reapplied to maintain maximum braking effectiveness if the brake controls remain applied.

ABS is capable of releasing and reapplying pressure more than 15 times per second.

### Turning

Approach turns and curves with caution. Riders often try to take curves or turns too fast. When they can't hold the turn, they end up crossing into another lane of traffic or going off the road. Or, they overreact and brake too hard, causing a skid and loss of control.



The following four steps will help you learn to turn effectively. Note that in actual use these steps may overlap:

- **SLOW** — Reduce speed before the turn by closing the throttle and, if necessary, applying both brakes.
- **LOOK** — Look through the turn to where you want to go. Turn just your head, not your shoulders, and keep your eyes level with the horizon.
- **PRESS** — To turn, the motorcycle must lean. To lean the motorcycle, press on the handgrip in the direction of the turn. Press left handgrip — lean left — go left. Press right handgrip — lean right — go right. The higher the speed in a turn, or the sharper the turn, the greater the lean angle needs to be.
- **ROLL** — Roll on the throttle to maintain or slightly increase speed. This helps stabilize the motorcycle.

In regular turns, the rider and the motorcycle should lean together at the same angle.

In slow, tight turns, counterbalance by leaning the motorcycle only and keeping your body upright.

## KEEPING YOUR DISTANCE

It is good to have a “cushion of space” separating yourself from other vehicles on the roadway. This will provide you with a clear view of traffic situations, so that if someone else

### NORMAL TURNS



### SLOW, TIGHT TURNS



makes a mistake, you will have:

- More time to respond.
- More space to maneuver, including an escape path if necessary.

## Lane Positions

Successful motorcyclists know that they are safer when clearly seen by others. In some ways the size of the motorcycle can

### TEST YOURSELF

3

*When riding, you should:*

- A. Turn your head and shoulders to look through turns.
- B. Keep your arms straight.
- C. Keep your knees away from the gas tank.
- D. Turn just your head and eyes to look where you are going.

*Answer - page 45*

work to your advantage. Each traffic lane gives a motorcycle

three paths of travel, as indicated in the illustration.

Your lane choice should help you:

- Increase your ability to see and be seen.
- Avoid others' blind spots.
- Avoid surface hazards.
- Communicate your intentions.
- Avoid windblast from other vehicles.
- Provide an escape path.
- Set up for turns.

Many motorcyclists consider the left third of the lane – the left tire track of automobiles – to be their default lane position. But consider varying your lane position as conditions warrant, keeping in mind that no portion of the lane need be avoided — including the center.

You should position yourself in the portion of the lane where you are most likely to be seen and you can maintain a space cushion around you. Change position as traffic situations change. Ride in path 2 or 3 if vehicles and other potential problems are on your left only. Remain in path 1 or 2 if hazards are on your right only. If vehicles are being operated on both sides of you, the center of the lane, path 2, is usually your best option.

Remember, the center third of the lane is the place where debris and oil drippings from cars collect and where hazards such as surface covers are located. Unless the road is wet, the typical center strip permits adequate traction. You can operate to the left or right of the grease strip and still be within the center third of the traffic lane. Avoid riding on big buildups of oil

and grease usually found at busy intersections or tollbooths.

Experienced riders rely on their own strategies and judgment. One absolute, however, is to avoid riding in another vehicle's blind spot.

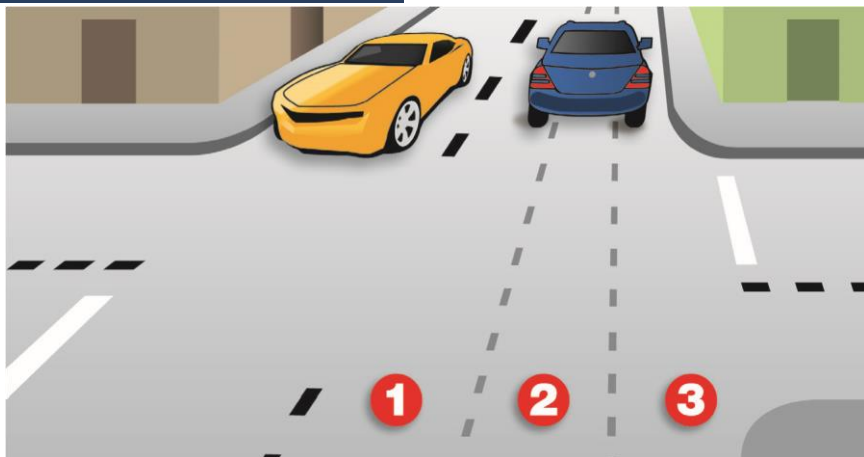
## Following Another Vehicle

“Following too closely” is a frequent factor in crashes involving motorcyclists. In traffic, motorcycles need as much distance to stop as cars. Normally, a **minimum of two seconds** distance should be maintained when following a vehicle.

*To gauge your following distance:*

## LANE POSITIONS

seconds: "one-thousand-one,



## FOLLOWING

- **Pick out a marker**, such as a pavement marking or lamppost, on or near the road ahead.
- **When the rear** of the vehicle ahead passes the marker, count off the

onethousand-two."

- **If you reach the marker** before you reach "two," you are following too closely.

A two-second following distance leaves a minimum amount of space to stop or

swerve if the driver ahead stops suddenly. It also permits a better view of potholes and other hazards in the road. A larger cushion of space is needed if your motorcycle will take longer than normal to stop. If the pavement is slippery, if you cannot see through the vehicle ahead, or if traffic is heavy and someone may squeeze in front of you, open up a three-second or more following distance.

Keep well behind the vehicle ahead even when you are stopped. This will make it easier to get out of the way

if someone bears down on you from behind. It will also give you a cushion of space if the vehicle ahead starts to back up for some reason.

When behind a car, ride where the driver can see you in the inside rearview mirror. Riding in the center portion of the lane should put you in view.

Riding at the far side of a lane may permit a driver to see you in a sideview mirror. But remember that most drivers don't look at their sideview mirrors nearly as often as they check the inside mirror. If the traffic situation allows, the center portion of the lane is usually the best place for you to be seen by the drivers ahead and prevent others encroaching into your space.

## Being Followed

Speeding up to lose someone following too closely can end up with someone tailgating you at a high speed.

A better way to handle tailgaters is to get them in front of you. When someone is following too closely, try to let them pass. If you can't do this, slow down and open up extra space ahead to allow room for both you and the tailgater to stop. This will also encourage them to pass. If they don't

pass, you will have given yourself and the tailgater more time and space to react in case an emergency does develop ahead.

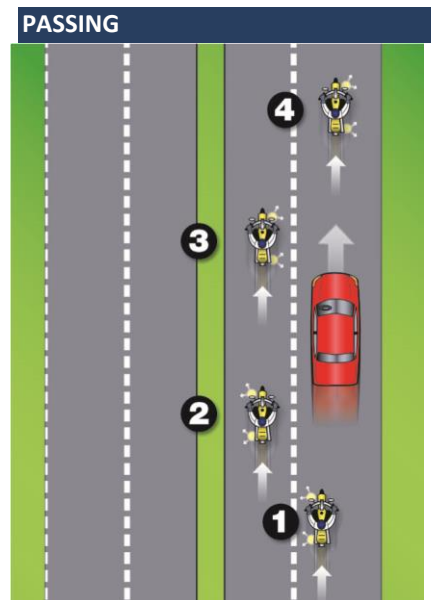
You can also turn off the roadway and re-enter later, or use a parking area to do the same thing.

## Passing

**1 Ride in the left portion of the lane** at a safe following distance to increase your line of sight and make you more visible. Signal and check for oncoming traffic. Use your mirrors and turn your head to check your blind spot.

**2 When safe,** move into the left lane and accelerate. Select a lane position that doesn't crowd the car and provides space to avoid hazards in your lane.

**3 Don't linger in the blind spot**



**4 Signal again**, and complete mirror and headchecks before returning to your original lane and then cancel the signal.

**Remember, passes must be completed within posted speed limits, and only where permitted. Know your signs and roadway markings!**

### Being Passed

When you are being passed from behind, stay in the center portion of your lane. Riding close to the passing vehicle could put you in a hazardous situation.

*Avoid being hit by considering:*

- **The other vehicle** — A slight mistake by you or the passing driver could cause a sideswipe.
- **Extended mirrors** — Some drivers forget that their mirrors hang out farther than their fenders.
- **Objects thrown from windows** — Even if the driver knows you're there,

a passenger may not see you and might toss something on you or the road ahead of you.

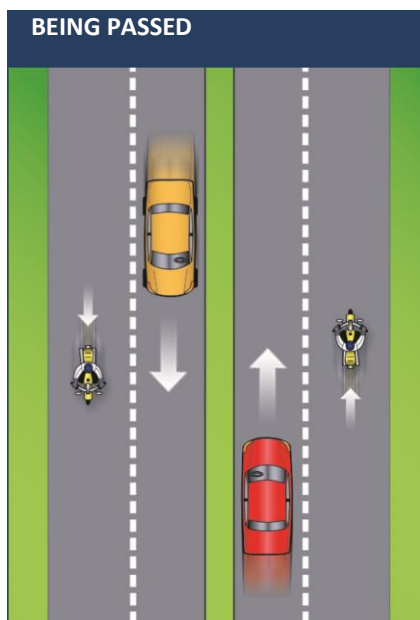
- **Blasts of wind from larger vehicles** — They can affect your control. You have more room for error if you are in the farther portion when hit by this blast than if you are closer to their lane.

### Lane Sharing

Cars and motorcycles need a full lane to operate safely. Lane sharing is usually prohibited.

Riding between rows of stopped or moving cars in the same lane can leave you vulnerable to the unexpected. A hand could come out of a window; a door could open; a car could turn suddenly. Discourage lane sharing by others. Keep a center-portion position whenever drivers might be tempted to squeeze by you. Drivers are most tempted to do this:

- **In heavy**, bumper-to-bumper traffic.
- **When they** want to pass you.
- **When you** are preparing to turn at an intersection.
- **When you** are moving into an exit lane or leaving a highway.



### Merging Vehicles

Drivers on an entrance ramp may not see you on the highway. Give them plenty of room. Change to another lane if one is open. If there is no room for a lane change, adjust speed to open up space for the merging vehicle.

### Vehicles Alongside

Do not ride next to cars or trucks in other lanes if you do not have to. You might be in the blind spot and a vehicle could switch into your lane without



warning. Vehicles in the next lane also block your escape if you come upon danger in your own lane. Speed up or drop back to find a place clear of traffic on both sides.

## SEE

Good, experienced riders are always aware of what is going on around them. They reduce their risk by using MSF's three-step SEE strategy:

- Search
- Evaluate
- Execute

SEE will help you assess what is going on in traffic so you can plan and implement the safest course of action as traffic situations change. Let's look at each of these steps.

## Search

How assertively you **search**, and how much time and space you have, can eliminate or minimize risk. As you search, focus on finding potential escape paths, especially in or around intersections, shopping areas and school and construction zones.

One way to search is to use your "RiderRadar" to aggressively scan the environment ahead of you, to the sides, and behind you to avoid potential hazards even before they arise. There

- C. Speed up to put distance between you and the tailgater. D. Ignore them.

*Answer - page 45*

## TEST YOURSELF

4

*Usually, a good way to handle tailgaters is to:*

- A. Change lanes and let them pass.
- B. Use your horn and make obscene gestures.

Anything that is within 4 seconds of your path is considered immediate because 4 seconds can provide enough time and space to swerve and/or brake for fixed hazards or for someone or something entering your path.

Finally, search for hazards that are further out, looking ahead to an area it would take about 12 seconds to reach. This provides time to prepare for a situation before it becomes urgent.

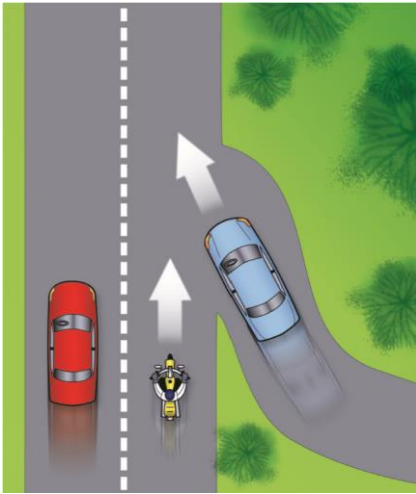
Using the SEE strategy will help you to **Search** for a variety of factors such as:

- **Oncoming traffic** that may turn left in front of you.
- **Traffic** coming from the left and from the right.
- **Traffic** approaching from behind.
- **Hazardous** road conditions that require you to be alert, especially in areas with limited visibility. Visually “busy” surroundings could hide you and your motorcycle from others.

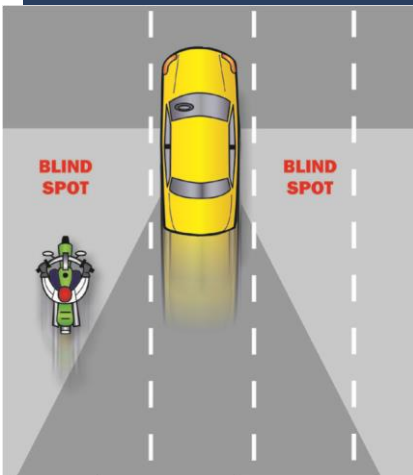
## Evaluate

**Evaluate** means to think about how hazards can interact to create risks for you. Anticipate potential problems and have a plan to reduce risks:

- **Road and surface characteristics** such as potholes, guardrails, bridges, telephone poles and trees may influence your riding strategy.
- **Traffic control devices** including traffic signals, warning signs, and pavement markings, which will require you to carefully evaluate circumstances ahead.
- **Vehicles and other traffic** that may move into your path and increase the likelihood of a crash. Think about your time and space requirements in order to maintain a margin of safety, and



## BLIND SPOTS

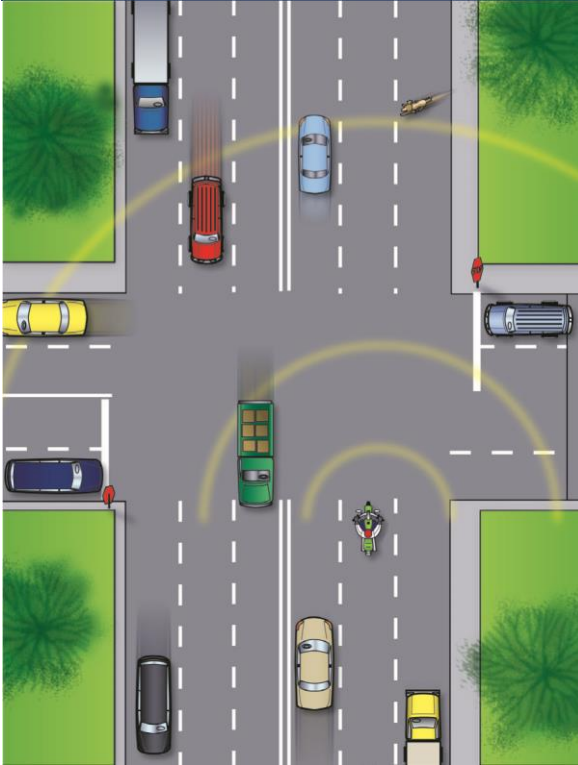


are three “lead times” to consider. First, have at least a 2-second following distance. Scanning your 4-second urgent path can allow you time for a quick response if something should go wrong.

give yourself time to react if an emergency arises.

- **Adjusting your position** and/ or direction by swerving, changing lanes,

## RIDER RADAR



Adjust speed to permit two hazards to separate. Then deal with them one at a time as single hazards. Decisionmaking becomes more complex with three or more hazards. Evaluate the consequences of each and give equal distance to the hazards.

In potential highrisk areas, such as intersections, shopping areas, and school and construction zones, cover the clutch and both brakes to reduce the time you need to react.

## INTERSECTIONS

The greatest potential for conflict between you and other traffic is at intersections. An

- **Escape paths** need to be available and these can be in front or to the sides.

or moving to another position within your lane.

## Execute

Finally, **Execute** your decision with smoothness and precision. To create more space and minimize harm from any hazard, take action by:

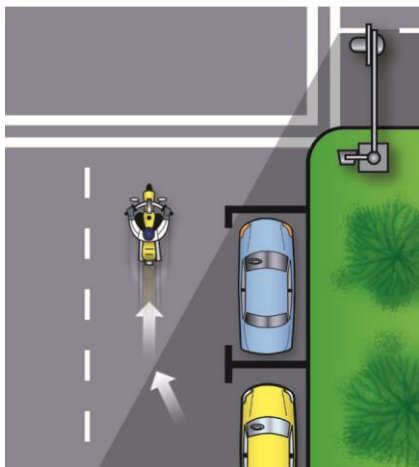
- **Communicating** your presence with lights and/or horn.
- **Adjusting your speed** by accelerating, stopping or slowing.

Apply the old adage “one step at a time” to handle two or more hazards. intersection can be in the middle of an urban area or at a driveway on a residential street — anywhere traffic may cross your path of travel. Over one-half of motorcycle/car crashes are caused by drivers violating a rider’s right-of-way. Cars that turn left in front of you, including cars turning left from the lane on your right, and cars on

side streets that pull into your lane, are the biggest dangers. Your use of SEE at intersections for added time and space is critical.

There are no guarantees that others see you. Never count on “eye contact.” Too often, a driver looks right at a motorcyclist and still fails to “see” him or her. The only eyes that you can count on are your own. If a car can enter your path, assume that it will. Good riders are always

vehicle driver is preparing to cross your path, slow and select a lane position to increase your visibility to that driver. Cover the clutch lever and both brakes to reduce reaction time. As you enter the intersection, move away from the vehicle. Do not change speed or position radically, as drivers might think you are preparing to turn. Be prepared to brake hard and hold your position if an oncoming vehicle turns in front of you, especially if there is other traffic around you. This strategy should also be used whenever a vehicle in



“looking for trouble” — not to get into it, but to stay out of it.

Decrease your risk by being seen at intersections. Ride with your headlight on and be in a lane position that provides the best view of oncoming traffic. Provide a space cushion around the motorcycle that gives you an escape path. When approaching an intersection where a

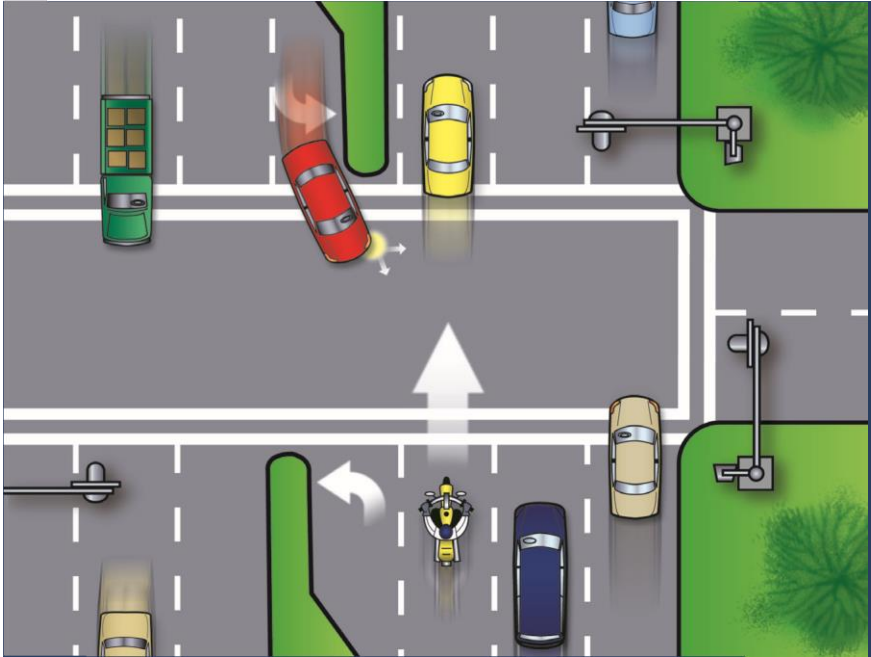
### SMALL INTERSECTION



### Blind Intersections

If you approach a blind intersection, move to the portion of the lane that will bring you into another driver’s field of the oncoming lane of traffic is signaling for a left turn, whether at an intersection or not.

vision at the earliest possible moment. In this picture, the rider has moved to the left portion of the lane — away from the parked car — so the driver on the cross street can see him earlier.



## LARGE INTERSECTIONS

Remember, the key is to see as much as possible and remain visible to others while protecting your space.

If you have a stop sign or stop line, stop there first. Then edge forward and stop again, just short of where the cross-traffic lane meets your lane. From that position, lean your body forward and look around buildings, parked cars or bushes to see if anything is coming.

*Answer - page 45*

Just make sure your front wheel stays out of the cross lane of travel while you're looking.

## Passing Parked Cars

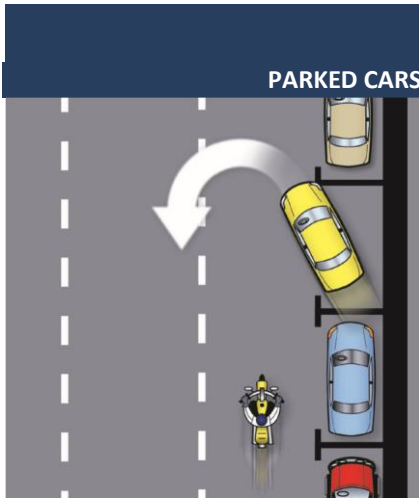
When passing parked cars, stay toward the left of your lane. You can avoid problems caused by doors

## TEST YOURSELF

5

**To reduce your reaction time, you should:**

- A. Ride slower than the speed limit.
- B. Cover the clutch lever and the brakes.
- C. Shift into neutral when slowing.
- D. Pull in the clutch when turning.

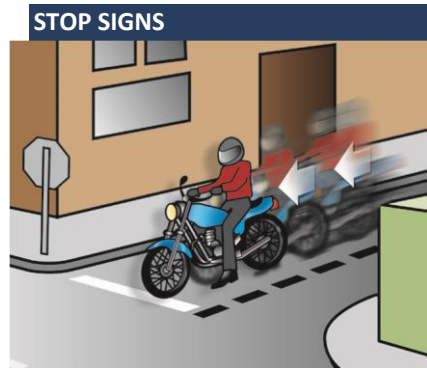
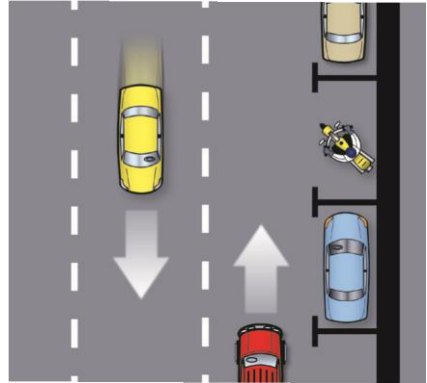


opening, drivers getting out of cars or people stepping from between cars. If oncoming traffic is present, it is usually best to remain in the center-lane position to maximize your space cushion on both sides.

A bigger problem can occur if the driver pulls away from the curb without checking for traffic behind. Even if he does look, he may fail to see you.

In either event, the driver might cut into your path. Slow down or change lanes to make room for someone who might cut in.

Cars making a sudden U-turn are dangerous. They may cut you off entirely, blocking the whole roadway and leaving you with no place to go. Since you can't tell what a driver will do, slow and get the driver's attention. Use your horn and continue with caution.



### Parking at the Roadside

If parking in a parallel parking space next to a curb, position the motorcycle at an angle with the rear wheel to the curb. (Note: Some cities have ordinances that require motorcycles to park parallel to the curb.)

### INCREASING CONSPICUITY

In crashes with motorcyclists, drivers often say that they never saw the motorcycle. From ahead or behind, a motorcycle's outline is much smaller than a car's. Also, it's difficult to see something you are not looking for,

and most drivers are not looking for motorcycles.

A good strategy to use is to pretend you're invisible. If you assume other motorists can't see you, you will tend to ride in a hyper-aware mindset and notice more details in your surroundings.

Even if a driver does see you coming, you aren't necessarily safe. Smaller vehicles appear farther away than they actually are. It is common for drivers to pull out in front of motorcyclists, thinking they have plenty of time. Too often, they are wrong.

However, you can do many things to make it easier for others to recognize you and your motorcycle.

## Clothing

Most crashes occur during daylight hours. Wear bright-colored clothing to increase your chances of being seen. Remember, your body is half of the visible surface area of the rider/motorcycle unit.

Bright orange, red, yellow or green jackets/vests are your best bets for being seen. Your helmet can do more than protect you in a crash. Brightly colored helmets can also help others see you.

Any bright color is better than drab or dark colors. Reflective, bright-colored clothing (helmet and jacket/vest) is best.

Reflective material on a vest and on the sides of the helmet will help drivers coming from the side to spot you. Reflective material can also be a big help for drivers both ahead and behind.

## Headlight

A good way to help others see your motorcycle is to have the headlight on — **at all times**. Studies show that, during the day, a motorcycle with its light on is twice as likely to be noticed.

Use low beam at night and in fog.

## Signals

The signals on a motorcycle are similar to those on a car. They tell others what you plan to do.

However, due to a rider's added vulnerability, signals are even more important. Use them anytime you plan to change lanes or turn. Use them even when you think no one else is around. Your signal lights make you easier to spot. That's why it's a good idea to use your turn signals even when what you plan to do is obvious.

When you enter a freeway, drivers approaching from behind are more likely to see your signal blinking and make room for you.

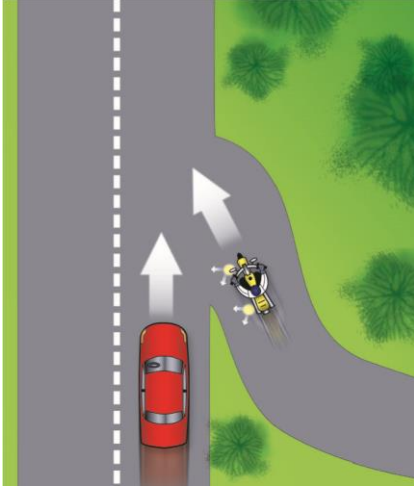
Turning your signal light on before each turn reduces confusion and frustration for the traffic around you. Once you turn, make sure your signal is off or a driver may pull directly into your path, thinking you plan to turn again. Use your signals at every turn so drivers can react accordingly. Don't make them guess what you intend to do.

## Brake Light

Your motorcycle's brake light is usually not as noticeable as the brake lights on a car. If the situation will permit, help others notice you by flashing your brake light before you slow down. It is especially important to flash your brake light before:

- **You slow more quickly** than others might expect (turning off a highspeed highway).
- **You slow where** others may not expect it (in the middle of a block or at an alley).
- **You are stopped** at an intersection with traffic approaching from behind.

If you are being followed closely, it's a good idea to flash your brake light before you slow. The tailgater may be watching you and not see something ahead that will make you slow down. This will



hopefully discourage them from tailgating and warn them of hazards ahead they may not see.

### Using Your Mirrors

While it's most important to keep track of what's happening ahead, you can't afford to ignore situations behind.

### TEST YOURSELF

6

#### *Making eye contact with other drivers:*

- A. Is a good sign they see you.
- B. Is not worth the effort it takes.
- C. Doesn't mean that the driver will yield.
- D. Guarantees that the other driver will yield to you.

*Answer - page 45*



Traffic conditions can change quickly. Knowing what's going on behind is essential for you to make a safe decision about how to handle trouble ahead.

Frequent mirror checks should be part of your normal searching routine. Make a special point of using your mirrors:

- **When you are stopped** at an intersection. Watch cars coming up from behind. If the drivers aren't paying attention, they could be on top of you before they see you.
- **Before you change lanes** Make sure no one is about to pass you.
- **Before you slow down** The driver behind may not expect you to slow, or may be unsure about where you will slow. For example, you signal a turn and the driver thinks you plan to turn at a distant intersection, rather than at a nearer driveway.

Most motorcycles have rounded (convex) mirrors. These provide a wider view of the road behind than do flat mirrors. They also make cars seem farther away than they actually are. If you are not used to convex mirrors, get familiar with them. (*While you are stopped, pick out a parked car in your mirror. Form a mental image of how far away it is. Then, turn around and look at it to see how good your estimate was.*) Practice with your mirrors until you become a good judge of distance. Even then, allow extra distance before you change lanes.

## Head Checks

Checking your mirrors is not enough. Motorcycles have "blind spots" like cars. Before you change lanes, turn your head, and look to the side for other vehicles.

On a road with several lanes, check the far lane and the one next to you. A driver

in the distant lane may head for the same space you plan to take.

Frequent head checks should be your normal scanning routine, also. Only by knowing what is happening **all around** you are you fully prepared to deal with it.

## Horn

Be ready to use your horn to get someone's attention quickly.

It is a good idea to give a quick beep before passing anyone that may move into your lane.

*Here are some situations:*

- **A driver** in the lane next to you is driving too closely to the vehicle ahead and may want to pass.



- **A parked car** has someone in the driver's seat.
- **Someone is in the street**, riding a bicycle or walking.

In an emergency, sound your horn loud and long. Be ready to stop or swerve away from the danger.

Keep in mind that a motorcycle's horn isn't as loud as a car's — therefore, use it, but don't rely on it. Other strategies, like having time and space to maneuver, are appropriate along with the horn.

## Riding at Night

At night it is harder for you to see and be seen. Picking your headlight or taillight out of the car lights around you is not easy for other drivers. To compensate, you should:

- **Reduce Your Speed** — Ride slower than you would during the day — particularly on roads you don't know well. This will increase your chances of avoiding a hazard.
- **Increase Distance** — Distances are harder to judge at night. Your eyes rely

upon shadows and light contrasts to determine how far away an object is and how fast it is coming. Open up a

three-second following distance or more. And allow more distance to pass and be passed.

- **Use the Car Ahead** — The headlights of the car ahead can give you a better view of the road than

## TEST YOURSELF

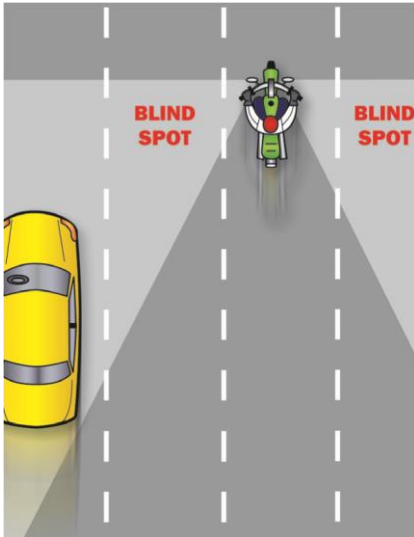
7

**Reflective clothing should:**

- Be worn at night.
- Be worn during the day.
- Not be worn.
- Be worn day and night

Answer - page 45

## USING MIRRORS



even your high beam can. Taillights bouncing up and down can alert you to bumps or rough pavement.

- **Use Your High Beam** — Get all the light you can. Use your high beam whenever you are not following or meeting a car.
- **Be visible** — Wear reflective materials when riding at night.
- **Do Not Override Your Headlight** — Do not let your total stopping distance exceed the distance your light beam illuminates. Slow down so you can stop within the distance you can see.
- **Be Flexible About Lane Position** — Change to the portion of the lane that is best to help you see, be seen and maintain an adequate space cushion.

## CRASH AVOIDANCE

No matter how careful you are, there will be times when you find yourself in a tight spot. Your chances of getting out safely depend on your ability to take action quickly and properly. Often, a crash

occurs because a rider is not prepared or skilled in crash-avoidance maneuvers.

Know when and how to stop or swerve, two skills critical in avoiding a crash. It is not always desirable or possible to stop quickly to avoid an obstacle. Riders must also be able to swerve around an obstacle. Determining which skill is necessary for the situation is important as well.

*Studies show that most crash-involved riders:*

- **Underbrake** the front tire and overbrake the rear.
- **Did not** separate braking from swerving or did not choose swerving when it was appropriate.

The following information offers some good advice. **Quick Stops**

To stop quickly, apply both brakes at the same time. Don't be shy about using the front brake, but don't "grab" it either. Squeeze the brake lever firmly and progressively. If the front wheel locks, release the front brake lever immediately then reapply it firmly. At the same time, press down on the rear brake. If you accidentally lock the rear brake on a good traction surface, you can keep it locked until you have completely stopped; even with a locked rear wheel, you can control the motorcycle if it is upright and going in a straight line.

## Stopping Quickly in a Curve

Using both brakes in a turn is possible, although it should be done very carefully. When leaning the motorcycle some of the traction is used for cornering. Less traction is available for stopping. A skid can occur if you apply too much brake. Also, using the front brake incorrectly on a slippery surface may be hazardous. Use caution and squeeze the brake lever, never grab.

If you must stop quickly while in a curve, first straighten and square the handlebars, then stop. If you find yourself in a situation that does not allow straightening first, such as when there is a danger of running off the road in a lefthand curve, or when facing oncoming traffic in a right-hand curve, apply the brakes smoothly and gradually. As you slow, you can reduce your lean angle and apply more brake pressure until the motorcycle is straight and maximum brake pressure can be applied. Always straighten the handlebars in the last few feet of stopping to maintain your balance and remain upright.

### Swerving or Turning Quickly

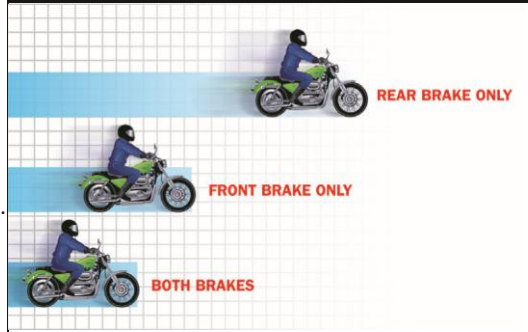
Sometimes you may not have enough room to stop, even if you use both brakes properly. You may encounter an unexpected object in your path. Or the car ahead might squeal to a stop. The only way to avoid a crash may be to turn quickly or swerve around it.

A swerve is a sudden change in direction. Apply a small amount of hand pressure to the handgrip located on the side of your intended direction of escape. This will cause the motorcycle to lean quickly. The sharper the desired turn(s), the more the motorcycle must lean.

Keep your body upright and allow the motorcycle to lean in the direction of the turn while keeping your knees against the tank and your feet solidly on the footrests. Let the motorcycle move underneath you. Make your escape path the target of your vision. Press on the opposite handgrip once you're clear

to return you to your original direction of travel.

### STOPPING DISTANCE



**If the situation allows, separate braking from swerving** Brake before or after – never while making an aggressive swerve.

### Maximum Straight-Line Braking

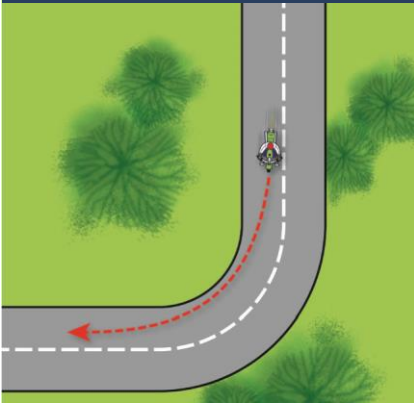
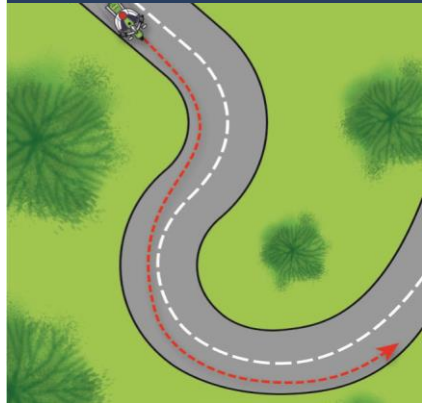
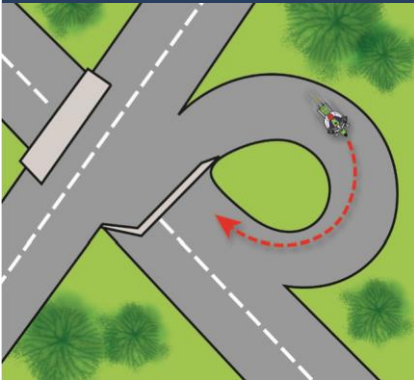
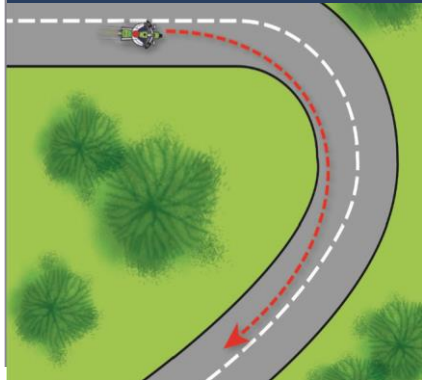
Maximum straight-line braking is accomplished by fully applying front and rear brakes without locking either wheel. Keep your body centered over the motorcycle and look well ahead, not down. This will help you keep the motorcycle as straight as possible, minimizing lean angle and the likelihood of the tires losing traction.

### Front-Wheel Skids

If the front wheel locks, release the front brake lever immediately, and reapply with less pressure.

Reapply the brake smoothly. Frontwheel skids result in immediate loss of steering control and balance. Failure to fully release the brake lever immediately will result in a crash.

### Rear-Wheel Skids

**CONSTANT CURVES****MULTIPLE CURVES****DECREASING CURVES  
(TIGHTER TURNS)****WIDENING CURVES**

A skidding rear tire is a dangerous condition that can result in a violent crash. Too much rear brake pressure causes rear-wheel lockup. As soon as the rear wheel locks, your ability to change direction is lost. To regain control the brake must be released. However, if the rear wheel is out of alignment with the front, there is a risk of a high-side crash. This occurs when the wheels are out of alignment and a locked rear wheel is released. The motorcycle can abruptly snap upright, throwing the rider into the air ahead

of the motorcycle's path. Even slight misalignment can result in a high-side crash.

**Curves**

A primary cause of single-vehicle crashes is motorcyclists running wide in a curve or turn.

Every curve is different. Be alert to whether a curve remains constant, gradually widens, gets tighter or involves multiple turns. Ride within your skill level and posted speed limits.

A good choice is to move to the center of your lane before entering a curve — and stay there until you exit. This permits you to spot approaching traffic as soon as possible. You can also adjust for traffic “crowding” the center line, or debris blocking part of your lane.

Your best path may not always follow the curve of the road. Change lane position depending on traffic, road conditions and curve of the road.

## HANDLING DANGEROUS SURFACES

Your chance of falling or being involved in a crash increases whenever you ride across:

- Uneven surfaces or obstacles.
- Slippery surfaces.
- Railroad tracks.
- Grooves and gratings.

### Uneven Surfaces and Obstacles

Watch for uneven surfaces such as bumps, broken pavement, potholes or small pieces of highway trash.

Try to avoid obstacles by slowing or going around them. If you must go over a smaller obstacle, approach it at as close to a 90° angle as possible. Look where you want to go to control your path of travel. If you have to ride over the obstacle, you should:

- **Slow down** as much as possible before contact.
- **Make sure** the motorcycle is straight.
- **Rise slightly** off the seat with your weight on the footrests to absorb the shock with your knees and elbows.

- **Just before contact**, quickly roll on the throttle slightly to lighten the front end and then roll off.

If you ride over an object on the street, pull off the road and check your tires and rims for damage before riding any farther.

## Slippery Surfaces

Motorcycles handle better when ridden on surfaces that permit good traction. Surfaces that provide poor traction include:

- **Wet pavement**, particularly just after it starts to rain and before surface oil washes to the side of the road.
- **Gravel roads**, or where sand and gravel collect.
- **Mud, leaves, snow, and ice**
- **Lane markings (painted lines)**, steel plates and surface covers, especially when wet.

To ride safely on slippery surfaces:

- **Reduce Speed** — Slow down before you get to a slippery surface to lessen your chances of skidding. Your motorcycle needs more distance to stop. And it is particularly important to reduce speed before entering wet curves.
- **Avoid Sudden Moves** — Any sudden change in speed or direction can cause a skid. Be as smooth as possible if you have to you speed up, shift gears, turn or brake.
- **Use Both Brakes** — The front brake is still effective, even on a slippery surface. Squeeze the brake lever gradually to avoid locking the front wheel. Remember, gentle pressure on the brakes.
- **The center of a lane** can be hazardous when wet. When it starts to rain, ride in

the tire tracks left by vehicles. Often, the left tire track will be the best position, depending on traffic and other roadway conditions.

- **Watch for oil spots** when you put your foot down to stop. You may slip and fall.
- **Dirt and gravel** collect along the sides of the road — especially on curves and ramps leading to and from highways. Be aware of what's on the edge of the road, particularly when making sharp turns and getting on or off freeways at high speeds.
- **Rain dries and snow melts faster** on some sections of a road than on others. Patches of ice tend to develop in low or shaded areas and on bridges and overpasses. Wet surfaces or wet leaves are just as slippery. Ride on the least slippery portion of the lane and reduce speed.



30

## RIDE WITHIN YOUR ABILITIES

### OBSTACLES

Cautious riders avoid roads covered with ice or snow. If you can't, keep your motorcycle straight up and proceed as *slowly* as possible. If you must travel at a walking pace, consider letting your feet skim along the surface. Be sure to keep off the brakes. If possible, squeeze the clutch lever and coast. Attempting this maneuver at anything other than the slowest of speeds could prove hazardous.

### Railroad Tracks, Trolley Tracks and Pavement Seams

Usually it is safer to ride straight within your lane to cross tracks. Turning to take tracks at a 90° angle can be more dangerous — the direction may put you into another lane of traffic.

For track and road seams that run parallel to your path, move far enough away from tracks, ruts, or pavement seams to cross at an angle of at least 45°. Then, make a deliberate turn so you're not thrown off balance.

### Grooves and Gratings

Riding over rain grooves or bridge gratings may cause a motorcycle to weave. The uneasy, wandering feeling is generally not hazardous. Relax, maintain a steady speed and ride straight across. Crossing at an angle forces riders to zigzag to stay in the lane. The zigzag is far more hazardous than the wandering feeling.



## MECHANICAL PROBLEMS

You can find yourself in an emergency the moment something goes wrong with your motorcycle. In dealing with any mechanical problem, take into account the road and traffic conditions. Here are some guidelines that can help you handle mechanical problems safely.

### TEST YOURSELF

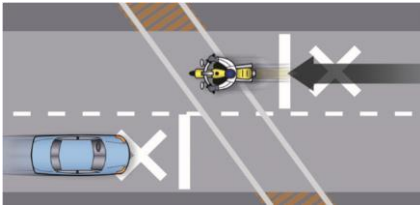
8

- The best way to stop quickly is to:*
- A. Use the front brake only.
  - B. Use the rear brake first.
  - C. Throttle down and use the front brake.
  - D. Use both brakes at the same time.

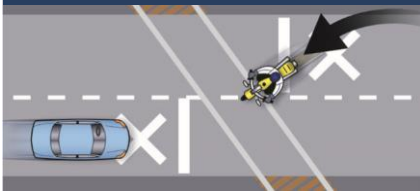
*Answer - page 45*

CROSSTRACKS—CORRECT

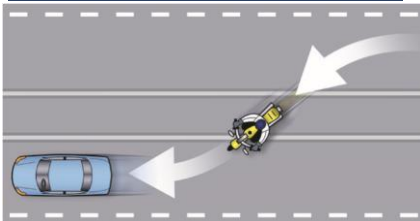
GRATE CROSSINGS—CORRECT



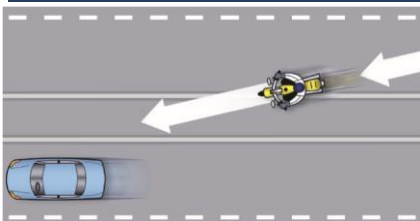
CROSTRACKS—INCORRECT



PARALLEL TRACKS—CORRECT



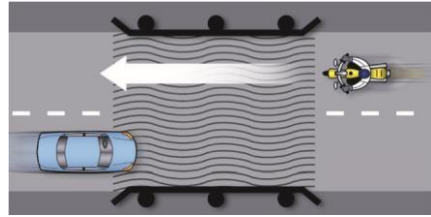
PARALLEL TRACKS—INCORRECT



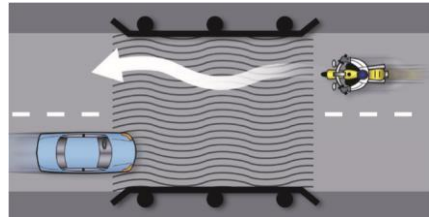
## Tire Failure

You will seldom hear a tire go flat. If the motorcycle starts handling differently, it may be a tire failure.

If the front tire goes flat, the steering will feel “heavy.” A front-wheel flat is particularly hazardous because it affects your steering. You have to steer well to keep your balance.



GRATE CROSSINGS—INCORRECT



If the rear tire goes flat, the back of the motorcycle may jerk or sway from side to side.

*If either tire goes flat while riding:*

- **Hold handgrips** firmly, ease off the throttle, and keep a straight course.
- **If braking is required** gradually apply the brake of the tire that isn't flat, if you are sure which one it is.
- **When the motorcycle slows** edge to the side of the road, squeeze the clutch and stop.

## Stuck Throttle

If the situation allows, twist the

### TEST YOURSELF

9

*When it starts to rain it is usually best to:*

- A. Ride in the center of the lane.
- B. Pull off to the side until the rain stops.
- C. Ride in the tire tracks left by cars.
- D. Increase your speed.

throttle back and forth several times. If the throttle cable is stuck, this may free it. If the throttle stays stuck, immediately operate the engine cut-off switch and squeeze the clutch lever at the same time. This will remove power from the rear wheel, though engine sound may not immediately decline. Move to a safe area and stop.

Check the throttle cable carefully to find the source of the trouble. Make certain the throttle works freely before you start to ride again.

## Wobble

A “wobble” occurs when the front wheel and handlebars suddenly start to shake from side to side at any speed. Most wobbles can be traced to improper loading, unsuitable accessories or incorrect tire pressure. If you are carrying a heavy load, lighten it or reposition it. Center the weight lower and farther forward on the motorcycle. Make sure tire pressure, spring pre-load, air shocks and dampers are at the settings recommended for the weight you are carrying. Make sure windshields and fairings are mounted properly.

Check for poorly adjusted steering; worn steering parts; a front wheel that is bent, misaligned, or out of balance; loose wheel bearings or spokes; and worn swingarm bearings. If none of these is determined to be the cause, have the motorcycle checked out thoroughly by a qualified professional.

Trying to “accelerate out of a wobble” will only make the motorcycle more unstable. Instead:

- **Grip the handlebars firmly**, but don’t fight the wobble.

- **Close the throttle gradually** to slow down. Do not apply the brakes; braking could make the wobble worse.
- **Move your weight** as far forward and down as possible.
- **Pull off the road** as soon as you can to fix the problem.

## Drive Train Problems

The drive train for a motorcycle uses either a chain, belt, or drive shaft to transfer power from the engine to the rear wheel. Routine inspection, adjustment, and maintenance makes failure a rare occurrence. A chain or belt that slips or breaks while you’re riding could lock the rear wheel and cause your motorcycle to skid.

If the chain or belt breaks, you’ll notice an instant loss of power to the rear wheel. Close the throttle and brake to a stop in a safe area.

On a motorcycle with a drive shaft, loss of oil in the rear differential can cause the rear wheel to lock, and you may not be able to prevent a skid.

## Engine Seizure

When the engine “locks” or “freezes” it is usually low on oil. The engine’s moving parts can’t move smoothly against each other, and the engine overheats. The first sign may be a loss of engine power or a change in the engine’s sound. Squeeze the clutch lever to disengage the engine from the rear wheel. Pull off the road and stop. Check the oil. If needed, oil should be added as soon as possible or the engine will seize. When this happens, the effect is the same as a locked rear wheel. Let the engine cool before restarting.

## ANIMALS

Naturally, you should do everything you safely can to avoid hitting an animal. If you are in traffic, however, remain in your lane. Hitting something small is less dangerous to you than hitting something big — like a car.

Motorcycles seem to attract dogs. If you are being chased, downshift and approach the animal slowly. As you approach it, accelerate and leave the animal behind. Don't kick at the animal. Keep control of your motorcycle and look to where you want to go.

For larger animals (deer, elk, cattle) brake and prepare to stop — they are unpredictable.

## FLYING OBJECTS

From time to time riders are struck by insects, cigarettes thrown from cars or pebbles kicked up by the tires of the vehicle ahead. If you are wearing face protection, it might get smeared or cracked, making it difficult to see. Without face protection, an object could hit you in the eye, face or mouth. Whatever happens, keep your eyes on the road and your hands on the handlebars. When safe, pull off the road and repair the damage.

## GETTING OFF THE ROAD

If you need to leave the road to check the motorcycle (or just to rest), be sure to:

- **Check the roadside** — Make sure the surface of the roadside is firm enough to ride on. If it is soft grass, loose sand or if you're just not sure about it, slow way down before you turn onto it.
- **Signal** — Drivers behind might not expect you to slow down. Give a clear signal that you will be slowing down and changing direction. Check your

mirror and make a head check before you take any action.

- **Pull off the road** — Get as far off the road as you can. It can be very hard to spot a motorcycle by the side of the road. You don't want someone else pulling off at the same place you are.
- **Park carefully** — Loose and sloped shoulders can make setting the side or center stand difficult.

## CARRYING PASSENGERS AND CARGO

The extra weight of a passenger or cargo will affect the way your motorcycle handles, requiring extra practice, preparation and caution. For this reason, only experienced riders should attempt to carry passengers or large loads. Before taking a passenger or a heavy load on the street, prepare yourself and your motorcycle for safe operation in traffic.

### Preparing Your Motorcycle

**Tire Pressure** — Check the air pressure of both tires. Refer to the owner's manual or the label affixed to the motorcycle for the correct inflation specifications. Though most of the added weight will typically be on the rear wheel, don't forget to also check the pressure on the front tire. Correct inflation pressures will maintain maximum stability, steering precision and braking capability.

**Suspension** — With a heavy load, the riding characteristics and balance of the motorcycle will change. On some motorcycles, it will be necessary to adjust the suspension settings (spring

## TEST YOURSELF

10

*If your motorcycle starts to wobble: A.*

- A. Accelerate out of the wobble.
- B. Use the brakes gradually.
- C. Grip the handlebars firmly and close the throttle gradually.
- D. Downshift.

*Answer - page 45*

preload, compression/damping settings, etc.) to compensate for the lowered rear of the motorcycle. Refer to the owner's manual for adjustment procedures and specifications.

**Headlight** – Prior to loading, position the motorcycle about 10 feet from a wall in an unlighted garage and mark the headlight beam location on the wall with chalk. With a full load and passenger, recheck the headlight beam location. Use the adjusting screws on the headlight to lower the beam to the same height. Check your owner's manual for adjustment procedure.

## Equipment for Carrying a Passenger

- Be sure your passenger is properly attired, wearing the same level of personal protective gear as you.
- Be sure your motorcycle is equipped with passenger footrests.
- Your motorcycle should have a proper seat, one large enough to hold both you and your passenger without crowding. You should not sit more forward than you usually do.
- Check that there is a strap or solid handholds for your passenger to hold onto.

## Preparing Your Passenger to Ride

Ensure your passenger is able to reach the passenger footrests, and is able to hold on to your waist, hips, belt, or the bike's passenger handholds. Children should be placed immediately behind the rider. A child sitting in front of the rider will not be able to properly balance him/herself and may interfere with the rider's control of the motorcycle.

Passenger safety begins with proper instruction. Riders should not assume that passengers are familiar with motorcycle handling, control, or balance. As a routine practice, always instruct your passenger on the basics prior to starting the trip, even if your passenger is a motorcycle rider.

As you prepare for your ride, tell your passenger to:

- Get on the motorcycle only after you have started the engine and have the transmission in neutral. As the passenger mounts, keep both your feet on the ground and the front brake applied.
- Sit as far forward as possible without hindering your control of the motorcycle.
- Hold firmly onto your waist, hips, belt or passenger handholds for balance and security.
- Keep both feet firmly on the footrests, even when stopped. Firm footing will prevent your passenger from falling off and pulling you off.
- Keep legs away from the muffler(s), chains or moving parts.
- Stay directly behind you and lean with you through turns and curves. It is helpful for the passenger to look over

the rider's shoulder in the direction of turns and curves.

- Avoid unnecessary conversation and avoid leaning or turning around. Make no sudden moves that might affect the stability of the motorcycle.
- Rise slightly off the seat when crossing an obstacle.

Also, remind your passenger to tighten his or her hold when you:

- Approach surface hazards such as bumps or uneven road surfaces.
- Are about to start from a stop or begin moving into traffic.
- Are about to turn sharply or make a sudden move.

### Riding With Passengers

Your motorcycle will respond differently when you ride with a passenger. The heavier your passenger, the longer it may take to speed up, slow down, or turn.

When riding with passengers:

- Ride a little slower, especially when taking curves, corners, or bumps. If any part of the motorcycle scrapes the ground at lean angle, steering control can be lost.
- Start slowing earlier as you approach a stop, and maintain a larger space cushion whenever slowing or stopping.
- Wait for larger gaps to cross, enter, or merge in traffic.

### Carrying Loads

Everything you are likely to need for a riding holiday or weekend trip can be packed on your motorcycle in many different ways. There are complete

luggage systems, saddlebags that are permanently attached to the motorcycle, soft bags that do not require a carrier system and can be tied to the seat, and a tank bag for other small items. You can also travel simply with only a backpack. Whatever you decide, do not exceed gross vehicle weight rating when traveling with cargo and a passenger, and always make adjustments to the motorcycle to compensate for the added weight.

### Tips for Traveling with Passengers and Cargo

- Try to place the load over, or in front of, the rear axle. Mounting loads behind the rear axle can affect how the motorcycle turns and brakes. It can also cause a wobble.
- Plan your route and length of each day's riding segment and allow plenty of time for breaks. Poor weather, breakdowns, and fatigue are always possible.
- Consider using secondary roads occasionally to reduce the monotony of multi-lane highways.
- Take a short break every hour or so. Eat healthy snacks and drink plenty of water.
- Don't forget sun protection in the summer. Some combinations of riding gear can leave your neck exposed, risking sunburn.
- If you wear a backpack, be sure it is securely attached to you. Try to adjust the shoulder straps so that the backpack rests lightly on the seat. This will reduce the tension in your neck and shoulders.

## TEST YOURSELF

11

***If you are chased by a dog:*** A.

Kick it away.

- B. Stop until the animal loses interest.
- C. Swerve around the animal.
- D. Approach the animal slowly, then speed up.

*Answer - page 45*

- If you have a tank bag, be sure it is securely mounted and does not obstruct your view of the controls or instruments. If necessary, pack it only partially full. When strapping the tank bag in place, make sure it does not catch any of the brake lines or cables in the area of the steering head.
- Secure loads low, or put them in saddlebags. Attaching a load higher raises the motorcycle's center of gravity and can upset its balance.
- If you use saddlebags, load each with about the same weight. An uneven load can cause the motorcycle to pull to one side. Overloading may also cause the bags to catch in the wheel or chain, locking the rear wheel and causing the motorcycle to skid.
- Fasten the load securely with elastic cords (bungee cords or nets). Elastic cords with more than one attachment point per side are recommended. A loose load could catch in the wheel or chain, causing it to lock up, resulting in a skid. Rope can stretch and knots can come loose, permitting the load to shift or fall. You should stop and check the load often to

make sure it has not shifted or loosened.

- Include a small tool kit and some common spare parts that you might need. Water and some energy bars or other food should also be part of your preparation, and don't forget a first aid kit.

**Pre-Ride Test**

Prior to starting out, take a test ride with your fully loaded motorcycle through some familiar neighborhood roads to get a feel for the operation. Be sure the suspension settings are correct, and that the side stand, footrests, and exhaust pipes don't scrape over bumps and in turns. Ensure the tank bag does not get in the way of the handlebars or restrict the steering. Also check the security of the load, so that your luggage does not hit you in the back under maximum braking.

You will also find that the performance of a fully loaded motorcycle will be different than what you are used to. Test the power when accelerating and be aware that it will be lower, increasing passing times and distances. Braking will also feel different, and stopping distances may increase.

**GROUP RIDING****Preparation**

Preparing yourself for a group ride is as important as making sure your motorcycle is ready. Riding with a group requires an alert mind that is free from worries, distractions and stress. It also means riding free from the influence of alcohol or drugs. For some, even too much caffeine or prescription drugs can adversely affect concentration.

Prior to a long trip, it's a good idea to have your motorcycle serviced at your local dealership if you aren't able to do the work

yourself. A thorough preride check is a must. Use the T-CLOCS checklist as a reminder of the important components to check before you leave. Remember to consider such variables as passengers and extra weight from cargo that might require a change in tire pressure or suspension adjustment.

## Plan

Before starting out, hold a rider's meeting to discuss the route, length of riding segments, rest stops and locations for fuel, meals and lodging. Make sure everyone knows the route. That way, if someone becomes separated, he or she won't have to hurry to keep from getting lost or making the wrong turn. Choose a lead rider and a sweep rider.

### TEST YOURSELF

12

#### *Passengers should:*

- A. Lean as you lean.
- B. Hold on to the motorcycle seat.
- C. Sit as far back as possible.
- D. Never hold onto you.

*Answer - page 45*

These should be the most experienced riders of the group. The lead rider should look ahead for changes in road, traffic or weather conditions, and signal early so the word gets back in plenty of time to the other riders. The sweep rider is the last rider in the group, and sets the pace for the group. Place inexperienced riders just behind the leader. That ensures that they won't have to chase after the

group, and the more experienced riders can watch them from the back.

The most important rules for group riding are: no competition, no passing of other riders and no tailgating. If a rider insists on riding faster than the group, allow him or her to go ahead to an agreed meeting point.

## Hand signals

During the rider's meeting, review the hand signals so all riders can communicate during the ride. A diagram of the common hand signals is at the end of this manual.

## Observe those behind

During the ride, use your mirrors to keep an eye on the person behind and confirm that the group is staying together. If a rider falls behind, everyone should slow down to keep the group together.

## Keep Your Distance

Maintain close ranks, but at the same time, maintain an adequate space cushion to allow each rider in the group time and distance to react to hazards. A close group takes up less space on the highway, is easier to see, and is less likely to become separated. This must, however, be done properly.

## Don't Pair Up

Never ride directly alongside another rider in the same lane. There is no place to go if you have to maneuver to avoid a car or hazard in the roadway. Wait until you are both stopped to talk.

## Staggered Formation

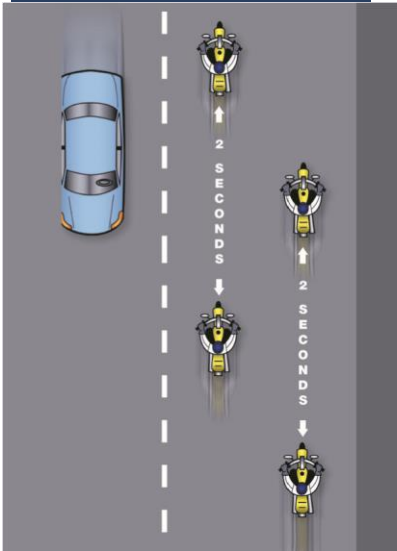
This is the best way to keep the ranks close yet maintain an adequate space cushion. The group leader rides in the left side of the lane, and the second rider stays at least one second back and rides in the



right side of the lane. The third maintains the left position of the lane, at least two seconds behind the first rider. The fourth rider should keep at least a two second distance from the second rider in the right side of the lane, and so on. This formation keeps the group close and permits each rider to maintain a safe distance from others ahead, behind and to the sides.

It is best to move to single file formation when riding in curves, turning, and entering or leaving freeways or highways. Be sure to keep a proper following distance

### STAGGERED FORMATION



### Intersections

Intersections present the highest risk for motorcyclists in a group. When making a left turn at an intersection with a left turn signal arrow, tighten the formation to

allow as many riders through the intersection as possible. Make the turn single file – do not ride side-by-side. If not all riders get through the light, stop at a safe point ahead and wait. This will prevent riders from feeling pressured to speed up or run a red light.

### Interstate Highways and Freeways

A staggered formation is essential when riding on freeways and interstates. However, enter in single file and form up only after all riders have safely merged in traffic. The lead rider should move the group over at least one lane to prevent vehicles that are entering and exiting from disrupting your formation. In heavy traffic, resist the temptation to ride too close together. Maintain your minimum one-second, two-second staggered formation space cushion. When exiting, use a single file formation for better space cushion and time to react to conditions at the end of the off-ramp.

### Parking

When possible, park as a group, so everyone can get off their motorcycles more quickly. Avoid parking downhill or head-in, and if possible, park where you can pull through, making the arrival and departure smoother. Whenever possible, park so that the group can depart as a unit in single file.

### Passing in Formation

When the group wants to pass slow traffic on a freeway or interstate, the group may pass as a unit. On a two-lane highway, riders in a staggered formation should pass one at a time.

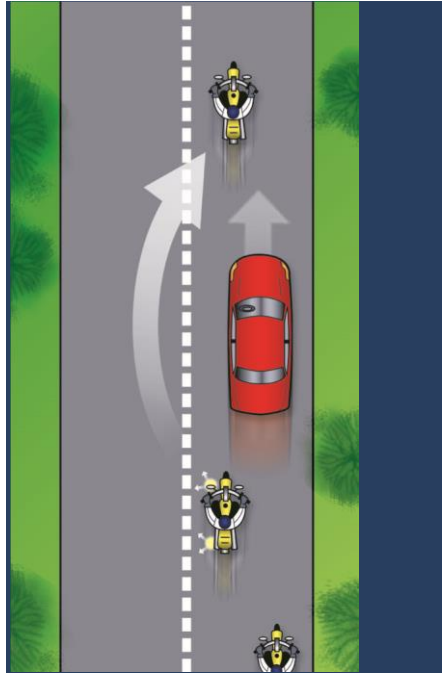
- First, the lead rider should pull out and pass when it is safe. After passing the leader should return to the left position and continue riding at passing speed to open room for the next rider.

■ Next, the second rider should move up to the left position in the lane and wait for a chance to safely pass. When passing be sure you have a clear view of oncoming traffic. Just because the lead rider passed, that does not mean that conditions haven't changed and that it is still safe for other riders to pass. After passing the rider should return to the right position and open up room for the next rider.

Some people suggest that the lead rider should move to the right side of the lane after passing the vehicle. This is not a good idea, since it might encourage the second rider to pass and cut back in before there is enough space cushion in front of the passed vehicle. It's simpler and safer to wait until there is enough room ahead of the passed vehicle to allow each rider to move into the same position held before the pass.

- B. In front of the group.
- C. At the tail end of the group.
- D. Beside the leader.

Answer - page 45



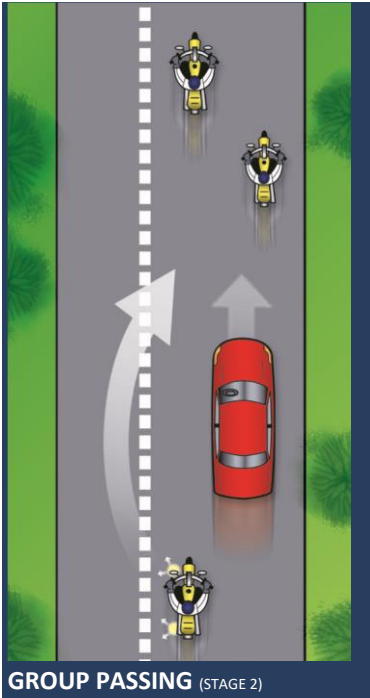
GROUP PASSING (STAGE 1)

### TEST YOURSELF

13

*When riding in a group, inexperienced riders should position themselves:*

- A. Just behind the leader.



**GROUP PASSING** (STAGE 2)

### Ten Rules of Group Riding

- Do not pass within the group, except in the case of emergency.
  - Place inexperienced riders just behind the leader so they can keep pace without riding faster than it is safe.
  - When passing, be conscious of the traffic conditions and oncoming traffic. Even though the previous riders passed safely, it may not be safe for you.
  - Maintain adequate time distance between riders, especially at intersections. This allows you to avoid hard braking.
  - Check your mirrors frequently to ensure the group stays together.
- Base the length of the route and segments on ability of the least experienced rider.
  - Take timely breaks to prevent loss of concentration and reduce fatigue.
  - Adjust the pace through curves to the ability of the least experienced rider. If necessary, form two groups with different speeds.
  - Don't tailgate or encourage the rider in front to speed. If you want to ride faster, ride well ahead of the group.
  - Keep adequate following distance and maintain a staggered formation.

Riding a motorcycle is a demanding and complex task. Skilled riders pay attention to the riding environment and to operating the motorcycle, identifying potential hazards, making good judgments and executing decisions quickly and skillfully. Your ability to perform and respond to changing roadway and traffic conditions is influenced by how fit and alert you are. Alcohol and drugs, more than any other factor, degrade your ability to think clearly and to ride skillfully. As little as one drink can have a significant effect on performance.

Let's look at the risks involved in riding after drinking or using drugs. What to do to protect yourself and your fellow riders is also examined.

## WHY THIS INFORMATION IS IMPORTANT

Alcohol is a major contributor to motorcycle crashes, particularly fatal crashes. Studies show that nearly a third of all fatally injured motorcycle riders had BAC levels above the legal limit of 0.08%. An additional 8% had lower alcohol levels (BAC 0.01 to 0.07%), demonstrating that having only a drink or two in one's system is enough to impair riding skills. Drug involvement is harder to distinguish and may have been separated from drinking violations for the traffic records. But riding "under the influence" of either alcohol or drugs poses physical hazards and legal consequences for every rider.

Drinking and drug use is as big a problem among motorcyclists as it is among automobile drivers. Motorcyclists, however, are more likely to be killed or severely injured in a crash. Injuries occur in 90% of motorcycle crashes and 33% of automobile crashes that involve abuse of substances.

By becoming knowledgeable about the effects of alcohol and drugs you will see that riding and impairment don't mix. Take positive steps to protect yourself and prevent others from harming themselves.

## ALCOHOL AND DRUGS IN MOTORCYCLE OPERATION

No one is immune to the effects of alcohol or drugs. Friends may brag about their ability to hold their liquor or perform better on drugs, but alcohol or drugs make them less able to think clearly and perform physical tasks skillfully. Judgment and the decisionmaking processes needed for vehicle operation are affected long before legal limits are reached.

Many over-the-counter, prescription and illegal drugs have side effects that increase the risk of riding. It is difficult to accurately measure the involvement of particular drugs in motorcycle crashes. But we do know what the effects of various drugs have on the processes involved in riding a motorcycle. We also know that the combined effects of alcohol and drugs are more dangerous than either is alone.

## ALCOHOL IN THE BODY

Alcohol enters the bloodstream quickly. Unlike most foods and beverages, it does not need to be digested. Within minutes after being consumed, it reaches the brain and begins to affect the drinker. The major effect alcohol has is to slow down and impair bodily functions — both mental and physical. Whatever activity you do, you do less well after consuming alcohol.

## Blood Alcohol Concentration

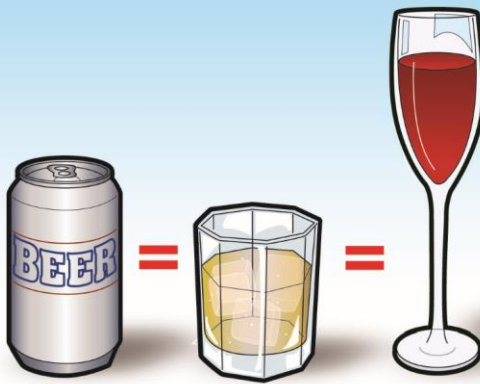
Blood Alcohol Concentration or BAC is the amount of alcohol in relation to blood in the body. Generally, alcohol can be eliminated in the body at the rate of almost one drink per hour. But a variety of factors may also influence the level

Abilities and judgment can be affected by that one drink.

A 12-ounce can of beer, a mixed drink with one shot (1.5 ounces) of hard liquor, and a 5-ounce glass of wine all contain the same amount of alcohol.

The faster you drink, the more alcohol

**4141**



of alcohol retained. The more alcohol in your blood, the greater the degree of impairment.

*Three primary factors play a major part in determining BAC:*

- **The amount** of alcohol you consume.
- **How fast** you drink.
- **Your body** weight.

Other factors also contribute to the way alcohol affects your system.

Your sex, physical condition and food intake are just a few that may cause your BAC level to be even higher. But the full effects of these are not fully known.

**Alcohol may still accumulate in your body even if you are drinking at a rate of one drink per hour, especially for women**

accumulates in your body. If you drink two drinks in an hour, at the end of that hour, at least one drink will remain in your bloodstream.

Without taking into account any other factors, these examples illustrate why time is a critical factor when a rider decides to drink.

If you drink:

- Seven drinks over the span of three hours you would have at least four ( $7 - 3 = 4$ ) drinks remaining in your system at the end of the three hours. You would need at least another four hours to eliminate the alcohol from the four remaining drinks before you consider riding.

– Four drinks over the span of two hours, you would have at least two ( $4 - 2 = 2$ ) drinks remaining in your system at the end of the two hours. You would need at least another two hours to eliminate the alcohol from the two remaining drinks before you consider riding.

## ALCOHOL AND THE LAW

In all but one state, an adult with a BAC of 0.08% or above is considered intoxicated (in Utah the threshold is 0.05%). For operators under the age of 21, lower BAC limits (0.00 to 0.02%, depending on state) apply. It doesn't matter how sober you may look or act. A breath, blood, or urine test is what usually

### ALCOHOL CONTENT

determines whether you are riding legally or illegally.

Whether or not you are legally intoxicated is not the real issue. Impairment of judgment and skills begins well below the legal limit.

## Consequences of Conviction

Years ago, first offenders had a good chance of getting off with a small fine and participation in alcohol-abuse classes. Today the laws of most states impose stiff penalties on drinking operators. And those penalties are mandatory, meaning that judges must impose them.

If you are convicted of riding under the influence of alcohol or drugs, you may receive any of the following penalties:

- **License Suspension** — Mandatory suspension for conviction, arrest or refusal to submit to a breath test.
- **Fines** — Severe fines are another aspect of a conviction, usually levied with a license suspension.

- **Insurance Rate Increase** — A DUI/ DWI conviction can put you into a “high risk” category. So, having a DUI on your driving record means you'll be paying for it long after your court or legal interactions have ended.
- **Community Service** — Performing tasks such as picking up litter along the highway, washing cars in the motor-vehicle pool or working at an emergency ward.
- **Costs** — Additional lawyer's fees, lost work time spent in court or alcohol-education programs, public transportation costs (while your license is suspended), and the added psychological costs of being known as a “drunk driver.”

## MINIMIZE THE RISKS

Your ability to judge how well you are riding is affected first. Although you may be performing more and more poorly, you think you are doing better and better. The result is that you ride confidently, taking greater and greater risks. Minimize the risks of drinking and riding by taking steps before you drink or choose to totally separate the two. Separate your drinking from your riding.

## Make an Intelligent Choice

**Don't Drink** — Once you start, your resistance is weaker.

Setting a limit or pacing yourself are poor alternatives at best. Your ability to use good judgment is one of the first things affected by alcohol. Even if you have tried to drink in moderation, you may not realize to what extent your skills have suffered from alcohol's impairing effects.

**Or Don't Ride** — If you haven't controlled your drinking, you must avoid riding.

- **Leave the motorcycle** — so you won't be tempted to ride. Arrange another way to get home.
- **Wait** — If you exceed your limit, wait until your system eliminates the alcohol and its fatiguing after-effects.

## STEP IN TO PROTECT A FRIEND

People who have had too much to drink are unable to make a responsible decision. It is up to others to step in and keep them from taking too great a risk. No one likes doing this — it's uncomfortable and embarrassing. And you are rarely thanked for your efforts at the time. But the alternatives are often worse.

There are several ways to keep friends from hurting themselves:

- **Arrange a safe ride** — Provide alternative ways for them to get home.
- **Slow the pace of drinking** — Involve them in other activities.
- **Keep them there** — Use any excuse to keep them from getting on their motorcycle. Serve them food and coffee to pass the time. Explain your concerns for their risks of getting arrested or hurt or hurting someone else. Take their key, if you can, and secure their bike.
- **Get friends involved** — Use peer pressure from a group of friends to intervene.

## CANNABIS & MOTOR-CYCLE OPERATION

Cannabis (Marijuana) is gaining acceptance as having legitimate medicinal applications and as a recreational drug in the United States, as evidenced by recent

trends in state laws permitting its use. More than half the states allow cannabis for medical use, and some allow it for recreational use by people 21 and over.

Although cannabis may be legal for medicinal or recreational use in your state, it is still not legal, safe, or wise to operate a motor vehicle while impaired by cannabis, since it tends to distort your perception of time, space and speed. This is especially critical for motorcycle riders, who must continually make detailed assessments of complex traffic situations and make split-second decisions requiring precise rider input to navigate safely and maintain an adequate safety margin.

When cannabis is smoked, its effects generally begin within a few minutes and can last from 2 to 4 hours. But when cannabis is eaten, the onset of effects could be delayed for more than an hour and the duration of the "high" could be

**43**

more than 6 hours.

Be safe. Do not operate your motorcycle or any motor vehicle if you are impaired by cannabis, and find alternate transportation if you are planning to be under the influence of cannabis at your destination. Just as with alcohol, riders impaired by cannabis can be convicted of riding under the influence, and be subjected to similar harsh penalties.

## FATIGUE

Riding a motorcycle is more tiring than driving a car. On a long trip, you'll tire sooner than you would in a car. Avoid riding when tired. Fatigue can affect your control of the motorcycle.

- **Protect yourself from the elements** — Wind, cold, and rain make you tire quickly. Dress warmly. A windshield is

Safe riding requires knowledge and skill. Licensing tests are a good measurement of the basic skills necessary to operate safely in traffic. Assessing your own skills is not enough. People often overestimate their own abilities. It's even harder for friends and relatives to be totally honest about your skills. Licensing exams are more complete and designed to be scored objectively.

To earn your license, most states require you to pass a knowledge test and an on-cycle skill test. Knowledge test questions are based on information, practices and ideas from this manual. They require that you know and understand road rules and safe riding practices. An on-cycle skill test will either be conducted in an actual traffic environment or in a controlled, off-street area.

worth its cost if you plan to ride long distances.

*Answer - page 45*

- **Limit your distance** — Experienced riders seldom try to ride more than about six hours a day.
- **Take frequent rest breaks** — Stop and get off the motorcycle at least every two hours.
- **Don't drink or use drugs** — Artificial stimulants often result in extreme fatigue or depression when they wear off. Riders are unable to concentrate on the task at hand.

## Knowledge Test

*(Sample Questions)*

1. ***It is MOST important to flash your brake light when:***
  - A. Someone is following too closely.
  - B. You will be slowing suddenly.
  - C. There is a stop sign ahead.
  - D. Your signals are not working.
2. ***The FRONT brake supplies how much of the potential stopping power?***
  - A. About 25%.
  - B. About 50%.
  - C. At least 70%.
  - D. All of the stopping power.
3. ***To swerve correctly:***
  - A. Shift your weight quickly.
  - B. Turn the handlebars quickly.
  - C. Press the handgrip in the direction of the turn.
  - D. Press the handgrip in the opposite direction of the turn.

## TEST YOURSELF

14

***If you wait one hour per drink for the alcohol to be eliminated from your body before riding:***

- A. You cannot be arrested for drinking and riding.
- B. Your riding skills will not be affected.
- C. Side effects from the drinking may still remain.
- D. You will be okay as long as you ride slowly.



4. **If a tire goes flat while riding and you must stop, it is usually best to:**

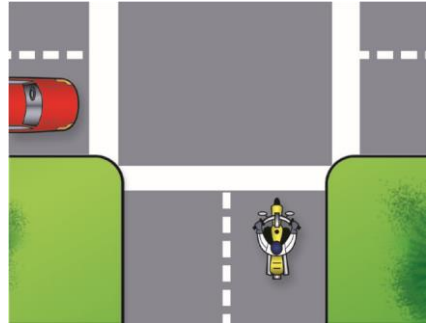
- A. Relax on the handgrips.
- B. Shift your weight toward the good tire.
- C. Brake on the good tire and steer to the side of the road.
- D. Use both brakes and stop quickly.

5. **The car below is waiting to enter the intersection. It is best to:** A. Make eye contact with the driver.

- B. Reduce speed and be ready to react.

C. Maintain speed and position.

D. Maintain speed and move right.



45

### On-Motorcycle Skill Test

Basic vehicle control and crashavoidance skills are included in onmotorcycle tests to determine your ability to handle normal and hazardous traffic situations.

*You may be tested for your ability to:*

- **Know your motorcycle** and your riding limits.
- **Accelerate, brake and turn safely**
- **See, be seen** and communicate with others.
- **Adjust speed** and position to the traffic situation.
- **Stop, turn and swerve quickly**
- **Make critical decisions** and carry them out.

*Examiners may score on factors related to safety such as:*

- **Selecting** safe speeds to perform maneuvers.
- **Choosing** the correct path and staying within boundaries.
- **Completing** normal and quick stops.

Answers to Test Yourself (throughout the booklet)

1-C, 2-D, 3-D, 4-A, 5-B,  
6-C, 7-D 8-D, 9-C, 10-C, 11-D, 12-A, 13-A, 14-C

Answers to Knowledge Test (p.44):

1-B, 2-C, 3-C, 4-C, 5-B

- **Completing** normal and quick turns or swerves.

*Diagrams and drawings used in this manual are for reference only and are not to correct scale for size of vehicles and distances.*

Many states require a separate license or endorsement to operate a three-wheel motorcycle. This requires the rider to pass both a written and a skills test. The purpose of this supplement is to help prepare riders to complete the written exam for a three-wheel motorcycle license or endorsement. This information is provided in addition to that offered in the first part of this Motorcycle Operator Manual (MOM), so when preparing to take the written test, begin by reading the information on two-wheel motorcycles thoroughly. It provides information on safe operation of your motorcycle in traffic. This supplement contains information specific to the safe operation of a three-wheel motorcycle, including both three-track motorcycles and motorcycles with sidecars.

## KNOW YOUR VEHICLE

There are many types of three-wheel motorcycles available on the market today. Requirements for licensing three-wheel motorcycles vary by state. In general, three-wheel motorcycles will have the following characteristics:

- 1 Three wheels** leaving two or three separate tracks during straight line operation.
- 2 Motorcycle-based** conversion or design with:
  - **Handlebar steering**
  - **Motorcycle-type controls** with the standard layout. Convenience alterations like a single brake pedal or lever control, automatic clutch, or automatic transmission.
  - **Saddle seating**
    - Seating in which the rider/passenger straddles the vehicle.
    - If designed for a passenger,

the passenger must be seated behind the operator (or in a separate passenger compartment in the case of a motorcycle with sidecar).

**3 Turning** diameter of the vehicle at its widest point must be less than 40'.

**4 The vehicle** meets all applicable federal on-road vehicle standards.

The following vehicles are not included in this definition, and therefore testing requirements may not be applicable. Always refer to your state Department of Motor Vehicles, Department of Licensing or other appropriate state regulatory agency for exact regulations regarding testing for:

- **Automotive hybrids** or automotive conversions
- **Vehicles with automotive** controls or seating
- **Vehicles with front or rear mounted engines** (engines must be mounted mid-frame below the rider to be considered motorcycle-based)
- **Vehicles with enclosed** or semienclosed riding compartments
- **Motorcycles or scooters** with two close-set wheels in front (contact patches less than 18.1 inches apart) that lean and maneuver like standard, single-track, two-wheel motorcycles
- or
- **Vehicles** with any other departure from the above standards.

## Three-Wheel Motorcycle Designs

Three-wheel motorcycle designs vary among manufacturers. Unlike traditional motorcycles, which are considered

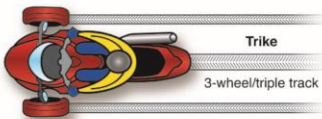
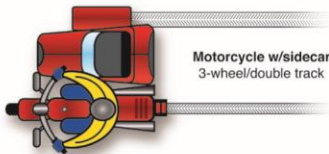
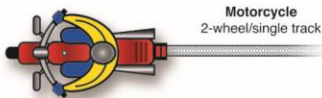
## THREE-WHEEL SUPPLEMENT

single-track motorcycles, three-wheel motorcycles could be either dual or triple track design. Dual track vehicles are motorcycles with sidecars, while triple track motorcycles can be configured either with dual front wheels or dual rear wheels.

### The Right Motorcycle for You

Make sure your three-wheel motorcycle or sidecar-equipped motorcycle is right for you. You should be able to comfortably reach and operate all of the controls, and be

#### MOTORCYCLE AND THREE-WHEEL MOTORCYCLE DESIGNS



able to complete full turns using the handlebars.

### Borrowing and Lending

Borrowers and lenders, beware.

Crashes are fairly common among beginning operators, especially in the first months of riding. Operating an unfamiliar motorcycle adds to the problem. If you borrow a three-wheel motorcycle or motorcycle with sidecar, get familiar with it in a controlled area first. If you lend your three-wheel motorcycle or motorcycle with sidecar to friends, make sure they are licensed and know how to ride before you allow them to operate in traffic. Such motorcycles operate very differently than two-wheel motorcycles.

No matter how experienced you may be, be extra careful on any vehicle that is unfamiliar or new to you.

### Get Familiar with Motorcycle Controls

Be sure you are familiar with the controls of the three-wheel motorcycle or motorcycle with a sidecar before attempting to operate it on any highway, since some controls may differ from those found on other motorcycles. This is especially important if you are riding on a borrowed motorcycle. Before beginning the ride:

- **Make all the checks** you would on your own motorcycle.
- **Familiarize yourself** with all controls, such as the turn signals, horn, headlight switch, fuel control valve, and cut-off

switch. Locate and operate these items without having to search for them.

- **Operate all the controls** before you start riding. Know the gearshift pattern and operate the throttle, clutch and brakes a few times. Controls react differently on different motorcycles, and exact locations of controls may vary slightly. Additionally, some motorcycle conversions may be equipped with a single brake pedal or lever control, automatic clutch, or automatic transmission.
- **As you begin to ride**, start out slowly and carefully and be aware of your surroundings. Accelerate gently, take turns slowly, and leave extra room for stopping.

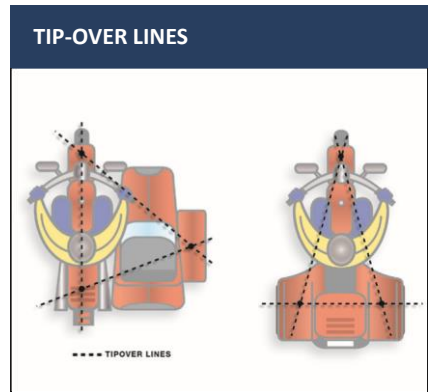
## BASIC VEHICLE CONTROL

### Steering & Tip

Three-wheel motorcycles handle differently than two-wheel motorcycles. With three wheels on the ground, they are naturally more stable than a two-wheel motorcycle. They also steer differently. Because conventional three-wheel motorcycles cannot lean, they cannot countersteer. Instead, the front wheel is pointed in the direction the rider wants the motorcycle to go.

Under some conditions during the operation of a three-wheel motorcycle, it is possible to have only two wheels in contact with the road surface. This could occur during turning or tight maneuvers whenever enough weight is transferred outside of what are called tip-over lines. This tendency requires careful load and passenger positioning inside the tip-over lines to help maintain maximum stability.

## Body Position



As with any motor vehicle, operator position is important for control and for reducing or preventing fatigue. The operator should be able to reach both handgrips comfortably, since more handlebar movement is necessary than when riding a two-wheel motorcycle. While it is not necessary for the rider of a three-wheel motorcycle to move drastically during operation, shifting weight in the direction of the turn can improve control.

### Braking

On a motorcycle with a sidecar, during braking in a sharp turn, the sidecar wheel may lift off the ground. Motorcycle and sidecar tires have limited traction or grip on the road surface, and traction is greater when the motorcycle is rolling, not skidding or slipping. During turning, some of the available tire traction is used for cornering, so less is available for stopping. Thus, a skid can occur if you brake too hard.

### Turning

The tendency of the rear inside wheel to lift during turning is greater with increased speed and tighter curve radii. During a turn, inertia causes the center of gravity of

## THREE-WHEEL SUPPLEMENT

the motorcycle to shift sideways and outward toward the tip-over line. The reduced weight over the opposite side wheel can cause it to lift slightly.

The weight of a three-track motorcycle is distributed almost equally between the two front or two rear wheels. These motorcycles generally handle the same in left and right hand turns.

***When turning a three-track motorcycle:***

- **Approach a turn** at speed with your head up, and look through the turn.
- **Concentrate** on pointing the front wheel/wheels in the direction you want the motorcycle to go.
- **Roll off** the throttle before entering the turn.
- **Apply the brakes** enough to slow the motorcycle to a speed at which you can ride safely through the turn, then release the brakes before the turn.
- **Slightly lean** your upper body in the direction you intend to turn.
- **Steer** the front wheel/wheels toward the turn.
- **Roll on** the throttle slightly for stability.

On the other hand, because the center of gravity of a motorcycle with sidecar is close to the motorcycle itself, the behavior of the vehicle when turning right and when turning left is quite different.

During a right turn, a slight sideways movement of the center of gravity creates a greater tendency for the sidecar wheel to lift. The lift will be greater if the sidecar is empty or lightly loaded.

***When turning right on a motorcycle with sidecar:***

- **Anticipate** the degree of turn required.
- **Reduce speed** before entering the curve by downshifting or braking.
- **Slightly lean** your upper body in the direction you intend to turn.
- **Maintain speed** as you enter the curve.
- **Accelerate** gradually as you exit the curve.

During a left hand turn, the sidecar acts as a stabilizer, so the sidecar wheel stays on the ground. However, if the turn is taken too sharply or at too high a rate of speed, there is a tendency for the motorcycle rear suspension to extend, and this may cause the rear wheel of the motorcycle to lift off the ground.

***When turning left on a motorcycle with sidecar:***

- **Reduce** speed prior to entering the turn
- **Apply** more pressure on the rear brake than on the front **Hills**

When riding uphill on a three-wheel motorcycle or motorcycle with a sidecar, some weight will shift to the rear, causing the front of the motorcycle to become lighter. This weight shift reduces the traction on the front tire/ tires for steering and tire grip.

When riding downhill, gravity increases the amount of braking force required to slow or stop the motorcycle. It is important, therefore, to begin slowing earlier for cornering and stopping.

## Lane Position

The track of the dual wheels of a three-wheel motorcycle or motorcycle with a sidecar is almost the same width as some automobiles. Unlike a motorcycle, you are limited, therefore, in lane positioning. Keep toward the center of the lane to be sure the track of the dual wheels does not cross the painted lines into opposing traffic. Riding too far to the right could cause loss of traction if the tire leaves the pavement.

Lane positioning when riding in groups is also an important consideration. You will not be able to use a staggered formation, such as you would when riding two-wheeled motorcycles. Ride single file and always maintain a safe margin, two seconds minimum, between vehicles.

## Parking at the Roadside

Because of the limitations on mobility and motorcycle length, it is not practical to park your motorcycle at a 90° angle with your rear wheel touching the curb, as you would with a two-wheel motorcycle. Position your motorcycle in a parking space so you are parked parallel to the curb and set the parking brake. Some three-wheel motorcycles have reverse, so you can more easily maneuver into a parking space designed for an automobile. Parking parallel to the curb will facilitate pulling away from the curb and entering the lanes of traffic.

## Acceleration and Deceleration

A three-wheel motorcycle with two drive wheels tends to be much more stable during acceleration and braking than a motorcycle with a sidecar. Attaching a sidecar to your motorcycle adds a non-powered, off-centered mass of weight. So, during acceleration, the sidecar will feel as though it is lagging

behind you, causing the vehicle to feel as though it is being steered to the right. During deceleration or braking, the momentum of the sidecar continues to carry it forward, giving the feeling that the sidecar is trying to pass you, making the motorcycle feel as though it is being steered left.

- **On acceleration**, compensate for this tendency by steering slightly in the opposite direction from the sidecar.
- **On deceleration**, compensate for this tendency by steering slightly in the direction of the sidecar. You can also squeeze the clutch lever when braking.

## Swerving

A quick stop may not always be sufficient to avoid an obstacle in your path, even if you properly apply both brakes. Sometimes the only way to avoid a collision is to swerve. A swerve is any sudden change of direction. It can be two quick turns or a rapid shift to the side when maneuvering the motorcycle. Often, there is not much time to adjust your body position.

A three-wheel motorcycle or motorcycle with sidecar is not as maneuverable as a two-wheel motorcycle, so plan well ahead to avoid the need for any sudden turns or swerving. If braking is required, brake either before or after the swerve, never while swerving.

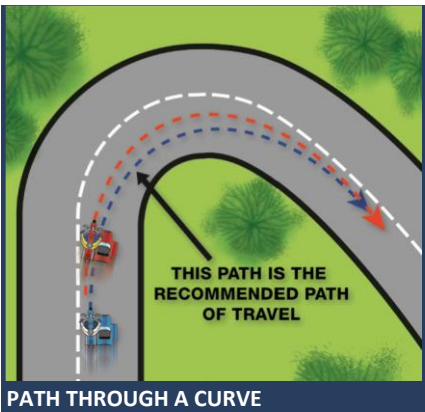
## Cornering & Curves

The cornering characteristics of a three-wheel motorcycle or motorcycle with a sidecar differ from those of a motorcycle. Even with three wheels on the ground, a sidecar can tip over if it is being turned too sharply or is going too fast for a corner.

## THREE-WHEEL SUPPLEMENT

Therefore, it is best to always slow before entering a corner.

The best path to follow in the curve may not be the one that follows the curve of the road. Check opposing traffic carefully, and if safe, enter the curve toward the outside of your lane. This increases your line of sight through the curve and reduces the effective radius of the curve. As you turn, move toward the inside of the curve, and as you pass the center, move to the outside to exit, always remembering to stay in your lane.



PATH THROUGH A CURVE

## CARRYING PASSENGERS AND CARGO

Three-wheel motorcycles are designed to carry passengers and cargo, but do not exceed the tire or motorcycle loading capacity. The extra weight could change the handling characteristics of the vehicle slightly, so you must give some thought to where the loads are positioned.

Many three-track motorcycles will have built-in storage compartments for cargo, either in front of, or behind the rider. On

these motorcycles, center the load and keep it low in the storage areas so it is positioned within the tip-over lines and balanced side-to-side. If a passenger is being carried, the passenger will sit directly behind the rider.

On a motorcycle with a sidecar, the best place for a passenger is in the sidecar. Never put a single passenger on the saddle; the added weight on the tip-over-line will increase the instability of the motorcycle. While a second passenger can be carried on the seat behind the rider, the heavier passenger should always be in the sidecar.

When carrying loads in a sidecar, secure the load firmly in place, since if the load shifts, handling will be affected. Loads should be distributed toward the rear of the sidecar to reduce tipping of the nose of the sidecar in the event of a sudden left turn.

When loaded, you may find performance is reduced and that stopping distances are longer, so allow some extra distance. The addition of a sidecar passenger will greatly improve stability, and right hand turns can be made at a slightly higher speed. Turning left, however, will require more turning force.



## HAND SIGNALS

**1 Single File**—  
arm and index  
finger extended  
straight up.



**2 Double File**—  
arm with index  
and middle finger  
extended straight up.



**3 Stop**—  
arm extended  
straight down,  
palm facing  
back.



**4 Speed Up**—  
arm extended  
straight out,  
palm facing up,  
swing upward.



**5 Slow Down**—  
arm extended  
straight out, palm  
facing down, swing  
down to your side.



**6 Follow Me**—  
arm extended  
straight up  
from shoulder,  
palm forward.

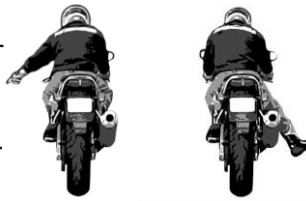


**7 You Lead/Come**—  
arm extended upward 45 degrees,  
palm forward pointing with index  
finger, swing in arc from back to front.



## HAND SIGNALS

**8 Hazard in Roadway—**  
on the left, point  
with left hand; on the  
right, point with right foot.



**9 Highbeam—**  
tap on top of  
helmet with open  
palm down.



**10 Fuel—**  
arm out to side  
pointing to tank with  
finger extended.



**11 Comfort Stop—**  
forearm extended,  
fist clenched with  
short up and down  
motion.



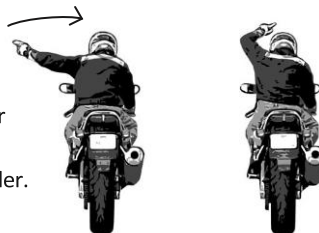
**12 Refreshment  
Stop—**  
fingers closed,  
thumb to mouth.



**13 Turn Signal On—**  
open and close  
hand with fingers  
and thumb extended.



**14 Pull Off—**  
arm positioned as for  
right turn, forearm  
swung toward shoulder.



## T-CLOCS: Pre-Ride Inspection Checklist

T-CLOCS ITEM	WHAT TO CHECK	WHAT TO LOOK FOR	CHECK-OFF	
<b>T-TIRES &amp; WHEELS</b>				
<b>Tires</b>	Condition	Tread depth, wear, weathering, evenly seated, bulges, embedded objects.	Front	Rear
	Air Pressure	Check when cold, adjust to load.	Front	Rear
<b>Wheels</b>	Spokes	Bent, broken, missing, tension, check at top of wheel: "ring" = OK — "thud" = loose spoke	Front	Rear
	Cast	Cracks, dents.	Front	Rear
	Rims	Out of round/true = 5mm. Spin wheel, index against stationary pointer.	Front	Rear
	Bearings	Grab top and bottom of tire and flex: No freeplay (click) between hub and axle, no growl when spinning.	Front	Rear
	Seals	Cracked, cut or torn, excessive grease on outside, reddish-brown around outside.	Front	Rear
<b>Brakes</b>	Function	Each brake alone keeps bike from rolling.	Front	Rear
<b>C-CONTROLS</b>				
<b>Levers and Pedal</b>	Condition	Broken, bent, cracked, mounts tight, ball ends on handlebar levers, proper adjustment.		
	Pivots	Lubricated.		
<b>Cables</b>	Condition	Fraying, kinks, lubrication: ends and interior.		
	Routing	No interference or pulling at steering head, suspension, no sharp angles, wire supports in place.		
<b>Hoses</b>	Condition	Cuts, cracks, leaks, bulges, chafing, deterioration.		
	Routing	No interference or pulling at steering head, suspension, no sharp angles, hose supports in place.		
<b>Throttle</b>	Operation	Moves freely, snaps closed, no revving when handlebars are turned.		
<b>L-LIGHTS</b>				
<b>Battery</b>	Condition	Terminals; clean and tight, electrolyte level, held down securely.		
	Vent Tube	Not kinked, routed properly, not plugged.		
<b>Headlamp</b>	Condition	Cracks, reflector, mounting and adjustment system.		
	Aim	Height and right/left.		
	Operation	Hi beam/low beam operation.		
<b>Tail lamp/ brake lamp</b>	Condition	Cracks, clean and tight.		
	Operation	Activates upon front brake/rear brake application.		
<b>Turn signals</b>	Operation	Flashes correctly.	Front left	Front right
			Rear left	Rear right

You can tear this page out and keep it with you when you ride.

<b>Mirrors</b>	Condition	Cracks, clean, tight mounts and swivel joints.	
	Aim	Adjust when seated on bike.	
<b>Lenses &amp; Reflectors</b>	Condition	Cracked, broken, securely mounted, excessive condensation.	
<b>Wiring</b>	Condition	Fraying, chafing, insulation.	
	Routing	Pinched, no interference or pulling at steering head or suspension, wire looms and ties in place, connectors tight, clean.	
<b>O-OIL</b>			
<b>Levels</b>	Engine Oil	Check warm on center stand on level ground, dipstick, sight glass.	
	Hypoid Gear Oil, Shaft Drive	Transmission, rear drive, shaft.	
	Hydraulic Fluid	Brakes, clutch, reservoir or sight glass.	
	Coolant	Reservoir and/or coolant recovery tank — check only when cool.	
	Fuel	Tank or gauge.	
<b>Leaks</b>	Engine Oil	Gaskets, housings, seals.	
	Hypoid Gear Oil, Shaft Drive	Gaskets, seals, breathers.	
	Hydraulic Fluid	Hoses, master cylinders, calipers.	
	Coolant	Radiator, hoses, tanks, fittings, pipes.	
	Fuel	Lines, fuel valve, carbs.	

### T-CLOCS: Pre-Ride Inspection Checklist

T-CLOCS ITEM	WHAT TO CHECK	WHAT TO LOOK FOR	CHECK-OFF	
<b>C-CHASSIS</b>				
<b>Frame</b>	Condition	Cracks at gussets, accessory mounts, look for paint lifting.		
	Steering-Head Bearings	No detent or tight spots through full travel, raise front wheel, check for play by pulling/pushing forks.		
	Swingarm Bushings/ Bearings	Raise rear wheel, check for play by pushing/pulling swingarm.		
<b>Suspension</b>	Front Forks	Smooth travel, equal air pressure/damping, anti-dive settings.	Left	Right
	Rear Shock(s)	Smooth travel, equal pre-load/air pressure/damping settings, linkage moves freely and is lubricated.	Left	Right

Chain or Belt	Tension	Check at tightest point.	
	Lubrication	Side plates when hot. Note: do not lubricate belts.	
	Sprockets	Teeth not hooked, securely mounted	
Fasteners	Threaded	Tight, missing bolts, nuts.	
	Clips	Broken, missing.	
	Cotter Pins	Broken, missing.	
<b>S-STANDS</b>			
Center stand	Condition	Cracks, bent.	
	Retention	Springs in place, tension to hold position.	
Side stand	Condition	Cracks, bent (safety cut-out switch or pad equipped).	
	Retention	Springs in place, tension to hold position.	

### EMERGENCY INFORMATION

Rider's Name \_\_\_\_\_ Blood Type \_\_\_\_\_

\_\_\_\_\_ Allergies/Medical Conditions

\_\_\_\_\_

Doctor's Name/Phone \_\_\_\_\_

\_\_\_\_\_

Cycle Insurer Name/Phone \_\_\_\_\_

\_\_\_\_\_

### Contact this person if rider is injured

Name \_\_\_\_\_ Home Phone \_\_\_\_\_

\_\_\_\_\_

Work Phone \_\_\_\_\_ Cell Phone \_\_\_\_\_

\_\_\_\_\_

The information contained in this publication is offered for the benefit of those who have an interest in riding motorcycles. The information has been compiled from publications, interviews and observations of individuals and organizations familiar with the use of motorcycles, accessories, and training. Because there are many differences in product design, riding styles, federal, state and local laws, there may be organizations and individuals who hold differing opinions. Consult your local regulatory agencies for information concerning the operation of motorcycles in your

area. Although the MSF will continue to research, field test and publish responsible viewpoints on the subject, it disclaims any liability for the views expressed herein.

*Distribution courtesy of Motorcycle Safety Foundation*

- Second Revision .....December 1978
- Third Revision .....February 1981
- Fourth Revision .....January 1983
- Fifth Revision ..... October 1987
- Sixth Revision ..... April 1991
- Seventh Revision .....September 1992
- Eighth Revision .....January 1999
- Ninth Revision .....March 2000
- Tenth Revision .....January 2002
- Eleventh Revision .....July 2002
- Twelfth Revision .....May 2004
- Thirteenth Revision .....June 2007
- Fourteenth Revision .....March 2008
- Fifteenth Revision .....June 2009
- Sixteenth Revision .....January 2011
- Seventeenth Revision .....February 2014
- Eighteenth Revision .....June 2020

# Motorcycles Make Sense – So Does Professional Training



Motorcycles are inexpensive to operate, fun to ride and easy to park. Unfortunately, many riders never learn critical skills needed to ride safely.

Professional training for beginning and experienced riders prepares them for real-world traffic situations. Motorcycle Safety Foundation *RiderCourses*<sup>SM</sup> teach and improve such skills as:

- Effective turning
- Braking maneuvers
- Protective apparel selection
- Obstacle avoidance
- Traffic strategies
- Self-assessment

**For the basic or experienced *RiderCourse* nearest you,  
call toll free: 800.446.9227 or visit [msf-usa.org](http://msf-usa.org)**

